



SOUTH AUSTRALIAN ECONOMIC INDICATORS

EMBARGO: 11:30AM (CANBERRA TIME) MON 2 MAR 1998

C O N T E N T S

	<i>page</i>
Notes	2
 REVIEW	
South Australian overview	3
State accounts	3
International accounts	5
Consumption and investment	6
Production	8
Prices	10
Labour force and demography	13
Incomes	16
Financial markets	17
Forward outlook	19
 FOCUS	
Grape growing and Wine production in South Australia: 1997	21
 TABLES	
List of tables	27
 ADDITIONAL INFORMATION	
Publications source index	51

I N Q U I R I E S

- For further information about these and related statistics, contact Mark Parham on Adelaide (08) 8237 7645, or any ABS office shown on the back cover of this publication.

NOTES

FORTHCOMING ISSUES

ISSUE	RELEASE DATE
April 1998	1 April 1998
May 1998	1 May 1998
June 1998	1 June 1998

.....

ABOUT THIS PUBLICATION

South Australian Economic Indicators is a monthly publication which contains the latest available data at the time of preparation for a range of statistical series that have been identified as indicators of economic activity in this State. In a number of cases the figures presented are preliminary and subject to revision in subsequent issues.

.....

CHANGES IN THIS ISSUE

There are no changes in this issue.

.....

SYMBOLS AND OTHER USAGES

n.a.	not available
n.y.a.	not yet available
*	subject to sampling variability too high for most practical purposes
..	not applicable
0, 0.0	nil or rounded to zero

.....

ROUNDING

Where figures have been rounded, discrepancies may occur between sums of the component items and totals.

.....

INFORMATION

More detailed information on each series, including explanatory and technical notes, can be obtained from other Australian Bureau of Statistics publications or alternative data sources. To assist those seeking further information a source publication for each of the series has been documented in the statistical summary.

P.M. Gardner
Regional Director
South Australia

REVIEW

SOUTH AUSTRALIAN OVERVIEW

- The value of merchandise exports, where the final stage of production was in South Australia, was \$482.5m in December 1997.
- The value of merchandise imports released from Customs control in South Australia rose to \$342.0m in December 1997.
- The trend estimate for retail turnover showed no change in December 1997 and the growth rate has slowed in recent months.
- The trend for total new vehicle registrations increased by 2.2% in December 1997 and has shown an increase for seven consecutive months.
- The trend estimate for dwelling unit approvals increased by 0.5% in December 1997 and 15.7% when compared with December 1996.
- The Consumer Price Index (all groups) in Adelaide showed no change between the September 1997 and December quarter 1997 and a decrease of 1.1% between the December quarters 1996 and 1997.
- The Price Index of Materials Used in House Building rose 0.4% in the December quarter 1997 and the Price Index of Materials Used in Building Other Than House Building increased by 0.3%.
- In November 1997 there were 9,138 short-term overseas visitor arrivals and 10,115 short-term resident departures from South Australia.
- The trend estimate of employed persons was 656,200 in January 1998, 0.7% lower than the level 12 months ago (660,700).
- The trend estimate of the unemployment rate has generally risen over the past 12 months, from 9.4% in January 1997 to 9.8% in January 1998.
- In November 1997, a total of 400 working days were lost through industrial disputation, a decrease of 300 over October (700).
- Total housing finance commitments (original figures including alterations and additions) increased 6.6% to \$284.7 million, 7.6% above the previous December.

STATE ACCOUNTS

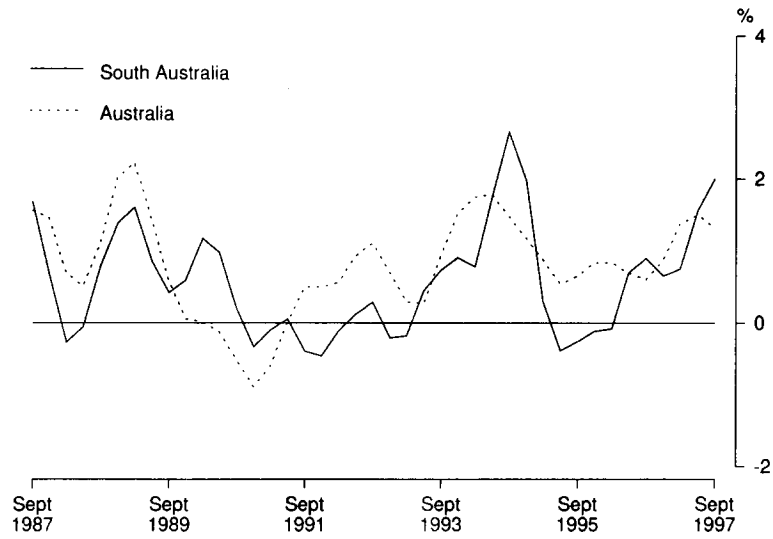
NOTE: The ABS no longer compiles quarterly State Account estimates. However, some of the information previously included in *Australian National Accounts: State Accounts* (Cat. No.5242.0) is now provided in a new Standard Data Service entitled *Australian National Accounts: Quarterly State Details* (Cat. No.5206.0.40.001). This information will be available quarterly, usually within one week of the release of the quarterly Australian National Accounts.

Trend (Constant prices)

State final demand (SFD) increased by 2.0% in the September quarter, the second highest of all States/Territories. The national rate was 1.3%. Growth through the year to September quarter 1997 was 5.1%, approximately the same as the national rate (5.2%). Contributing to the growth in SFD was a 6.3% increase in private gross fixed capital expenditure (due mainly to a 12.8% increase in non-dwelling construction).

Private final consumption expenditure rose 1.9% to be equal highest with the ACT. This continues an upward trend evident since the March quarter 1997 and was the strongest growth rate recorded since March 1995. Growth through the year to September quarter was 3.9% compared with the national rate of 3.3%

State final demand: **Trend** (Constant prices)(a)

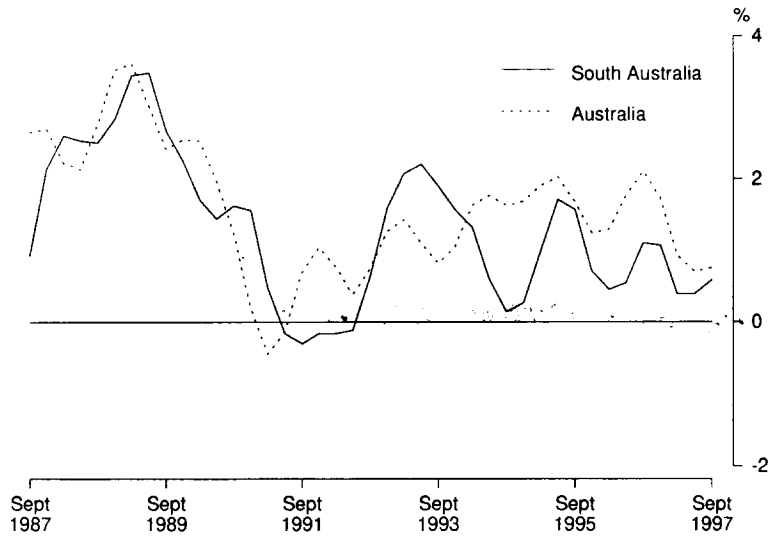


(a) Quarterly changes.

Trend (Current prices)

Wages, salaries and supplements grew by 0.6% in the September quarter. Growth through the year to September 1997 was 2.5%, significantly below the national rate of 4.2%. South Australia has now been below the national rate for the past 15 quarters.

Wages, salaries and supplements: **Trend** (Current prices)(a)



(a) Quarterly changes.

INTERNATIONAL ACCOUNTS

Merchandise exports

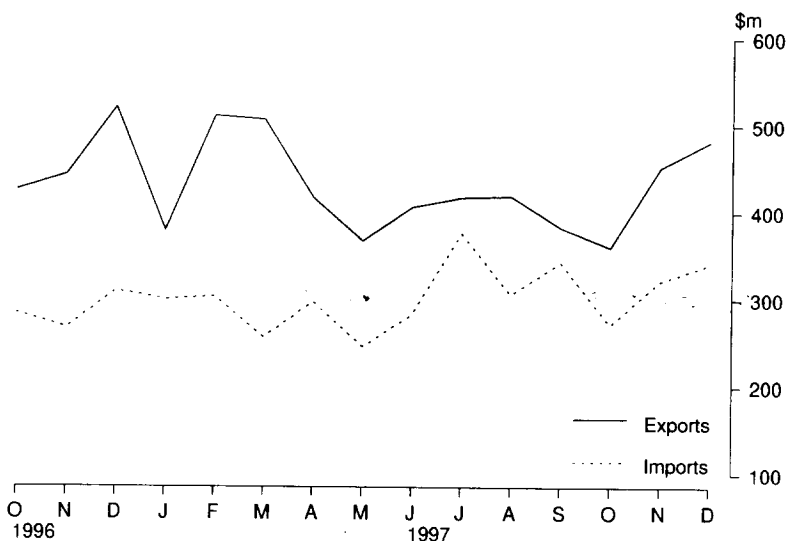
The value of merchandise exports, where the final stage of production was in South Australia, was \$482.5m in December 1997. This was 6.6% higher than November 1997 and 7.5% lower than December 1996. Despite a decrease of \$11.9m, road vehicles parts and accessories was the major commodity group exported in December 1997, followed by cereals and cereal preparations at \$67.2m (up \$58.4m). Metals and metal manufacturing exports fell 34.5%, from \$61.8m in November 1997 to \$40.5m in December.

The major destinations of South Australian exports in December 1997 were the United States of America (\$79.8m) and the ASEAN countries (\$56.1m). Exports to the Middle East experienced the largest increase, rising from \$20.0m in November 1997 to \$41.3m in December. The largest decrease was to the United States of America, with exports falling from \$92.7m to \$79.8m. Exports to East Asia fell by 10.4% from November 1997 while exports to the European Community increased by 5.8%.

Merchandise imports

The value of merchandise imports released from Customs control in South Australia were \$342.0m in December 1997, a 6.2% increase on the previous month and a 10.2% increase on December 1996. The largest increases occurred in machinery, up \$39.6m to \$115.5m and other manufactured goods, rising from \$51.3m to \$58.0m. Petroleum and petroleum products experienced the largest reduction, falling from \$67.2m to \$32.3m, a decrease of \$34.9m (51.9%).

Merchandise exports and imports



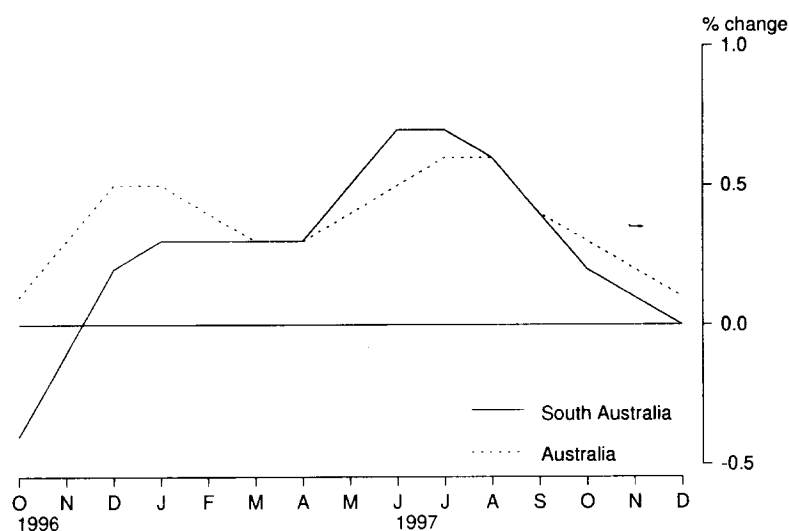
CONSUMPTION AND INVESTMENT

Retail turnover

The trend estimate for retail turnover has slowed over the last four months and showed no change between November and December 1997. Decreases in the trend estimates for both the hospitality and services, and department stores groups have influenced the recent slowdown in the series.

Over the three months to December 1997 the trend estimate for retail turnover has increased by \$2.9m. The major contributors to this growth were household good retailing (\$5.7m) and other retailing (\$7.5m) which was partly offset by a decrease in hospitality and services (\$9.0m).

Retail turnover: Trend



In original terms, South Australian retail turnover was \$1,066.5m in December 1997, an increase of 3.3% on December 1996. Australian turnover was \$14,591.4m, an increase of 5.9% for the corresponding period. The South Australian share of the Australian total was 7.3%.

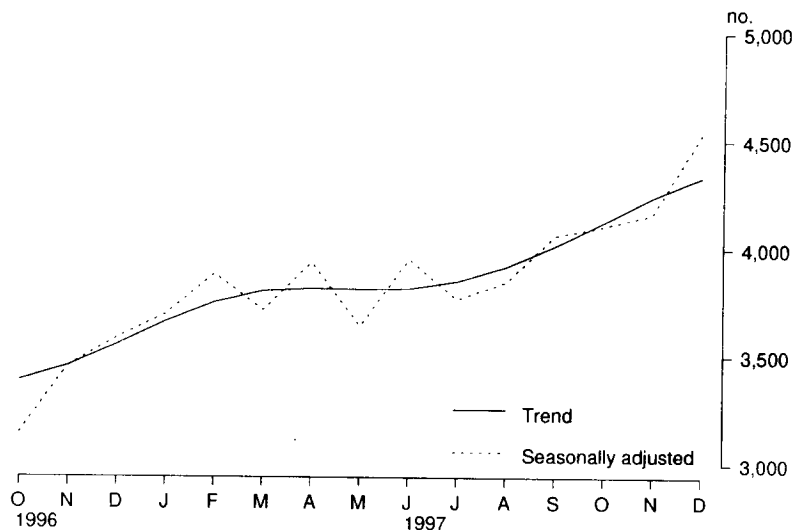
New motor vehicle registrations

The trend for new vehicle registrations rose for the seventh consecutive month, increasing by 2.2% for December 1997. The Australian trend has continued to increase each month since September 1996.

In original terms, the total number of new vehicles registered increased by 6.8% to 4,483 for December 1997. The leading makers of vehicles registered in South Australia for December 1997 were Holden (890 vehicles), Ford (636), Mitsubishi (581), Toyota (477) and Hyundai (318).

Australian total new vehicle registrations also increased, up 10.5% from November 1997 to 67,928 in December 1997.

New motor vehicle registrations

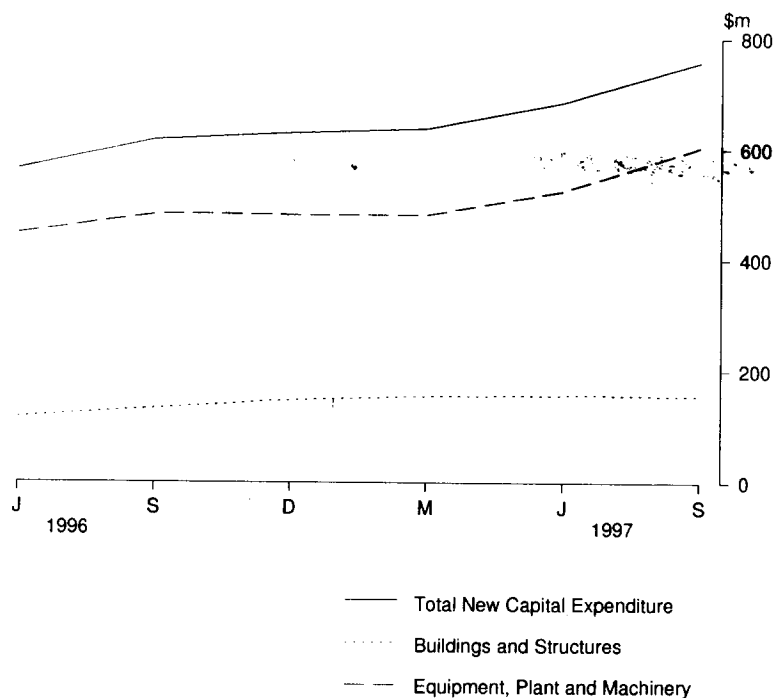


Private new capital expenditure

The trend estimate at current prices for private new capital expenditure for the September quarter 1997 increased 10.7% over the previous quarter. Expenditure on buildings decreased by 2.5%, while expenditure on equipment rose by 14.8%. The Australian total decreased by 0.4% in the same period.

Private new capital expenditure in original terms for the September quarter 1997 was \$718m, an increase of 11.0% from the September quarter 1996. Buildings and structures accounted for \$159m, and equipment, plant and machinery \$559m.

Private new capital expenditure, type of asset: **Trend**



Tourist accommodation

The number of rooms available in hotels, motels and guesthouses in South Australia for September quarter 1997 remained largely unchanged from September quarter 1996, rising by 6 to 10,885. The room occupancy rate increased to 52.2% (from 48.9%), compared with 58.0% for Australia. Takings in South Australia also increased, rising to \$41.7m, 3.4% and 11.1% higher than June quarter 1997 and September quarter 1996 respectively. Average takings per room night occupied was \$80.

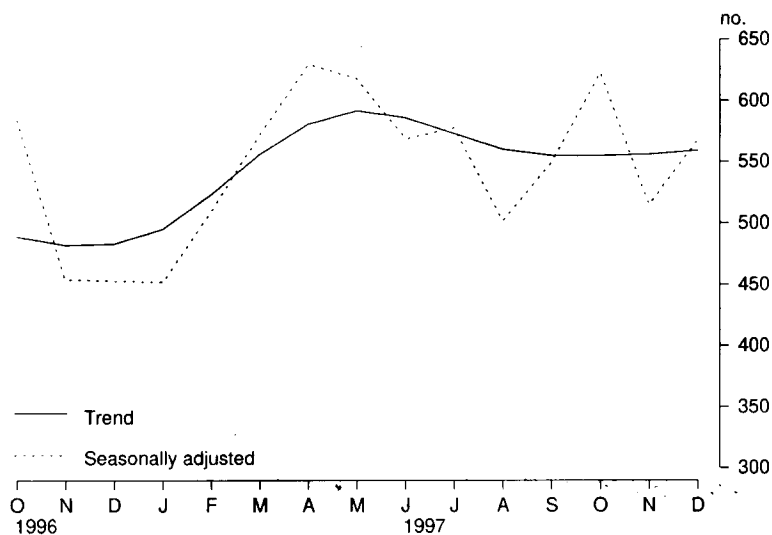
PRODUCTION

Building approvals

The trend for total dwelling units approved has flattened after some months of decline in the middle part of 1997. The total number of dwellings approved, in original terms for December 1997 was 513. Of these, private sector houses accounted for 475 and other residential dwelling units 30. For the 1997 calendar year, there were 6,677 dwelling units approved, 17.1% more than the 5,702 approved in 1996.

For Australia, the trend for total dwelling units approved increased by 15.5% over the last year. The rate of growth for 1997 has been steady despite a pause in trend growth in the March to July 1997 period. In original terms, South Australia accounted for 4.2% of the total dwelling units approved in Australia during December 1997.

Dwelling units approved



The total value of building approved in December 1997 was \$93.7m of which \$48.1m was new residential building and \$35.1m non-residential building. The value of non-residential building fell by 45.6% from November 1997 with the Educational (\$9.4m) and Other business premises (\$6.8m) sectors the main contributors to the value of non-residential building for December 1997 in South Australia.

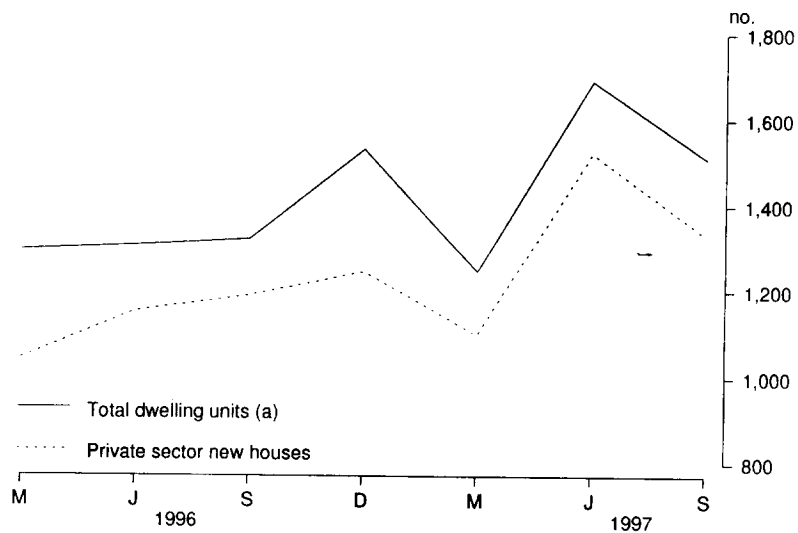
For the 1997 calendar year, the value of total building approved for South Australia was \$1,394.7m 19.7% more than previous year total value of \$1,165.5m.

Building activity

For the September quarter 1997, the trend for the total number of dwelling units commenced in South Australia increased marginally and follows a rise of 4.1% in the June quarter 1997. In original terms, 1,509 dwelling units were commenced in the September quarter 1997, a decrease of 182 or 10.8% from the previous quarter.

During 1996-97 there were 5,790 dwelling units commenced, a decrease of 2.9% from the 1995-96 financial year figure. Both the number of new houses and new other residential building commenced decreased when compared to the previous financial year, falling 10.7% to 5,113 and 19.1% to 651 respectively.

Dwelling units commenced



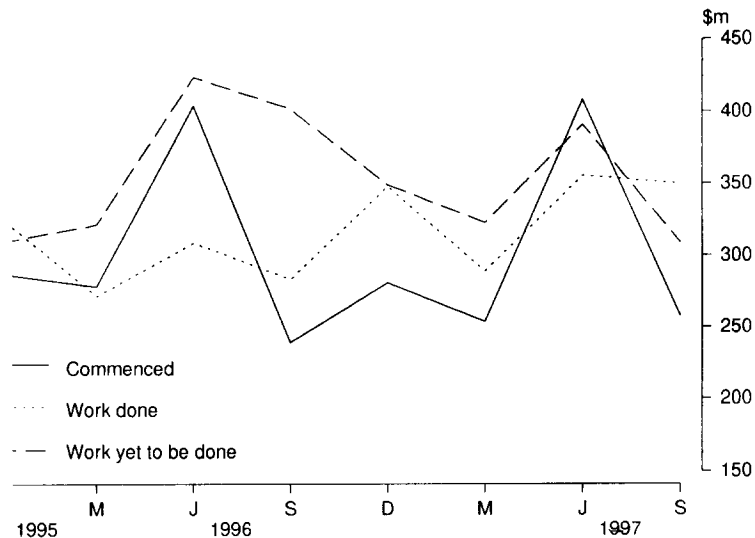
(a) Includes conversions.

The total value of building work commenced during the September quarter 1997 fell by 36.9% to \$257.7m from previous quarters high of \$408.4m. This fall can be mostly attributed to a 57.7% fall in the non-residential building sector, in particular, in the Hotels etc., Shops, Health and Miscellaneous categories. The value of total building work commenced for 1996-97 continued to decline, falling 5.4% from the previous financial year to \$1,181.9m.

The total value of building work done during the September quarter 1997 fell by 1.7% to \$349.7m compared with a 5.5% increase nationally. Compared with the September quarter 1996, South Australia had a 23.5% increase in the value of total building work done which was comparable with the national movement of a 19.7% increase. For the 1996-97 financial year, \$1,275.9m of building work was done in South Australia, 5.7% more than the previous financial year.

The total value of building work yet to be done was \$309.1m at the end of the September quarter 1997, a fall of 20.9% from the previous quarter while the corresponding national figure increased by 5.6% to \$11,246.1m. Expressed as a proportion of the national total, the total value of building work yet to be done in South Australia was 2.7% for the September quarter 1997.

Value of building activity



Engineering construction

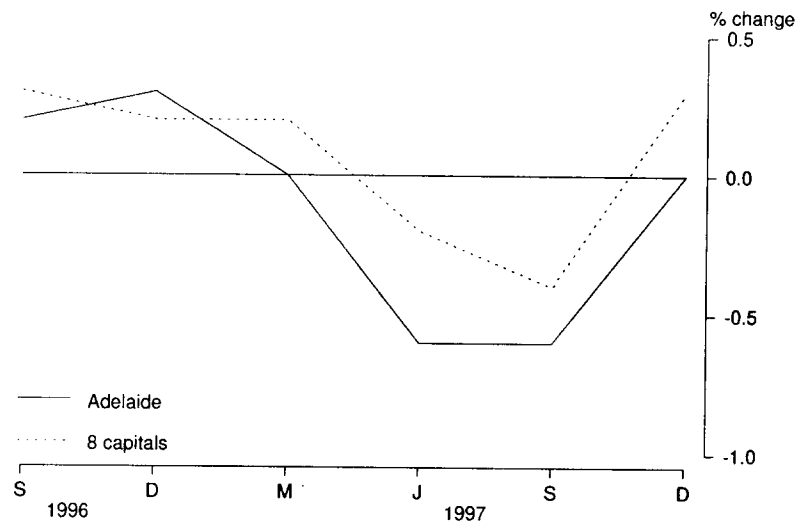
In South Australia, the value of engineering construction work done for the September quarter 1997 was down 16.9% to \$255.5m compared with a 12.0% fall nationally. South Australia's share of the national total of \$3,755.0m was 6.8%. The value of work commenced during the quarter for South Australia rose 32.1% to \$409.1m as did the corresponding national figure, increasing by 13.2% to \$5,003.1m. The State's proportion of national engineering and construction commencements was 8.2% for the September quarter 1997.

PRICES

Consumer Price Index

The Consumer Price Index (all groups) in Adelaide showed no change between the September 1997 and December 1997 quarters and a decrease of 1.1% between December 1996 and December 1997 quarters. Movements in groups between September and December 1997 included falls in housing and transportation, down 2.2% and 0.7% respectively and increases in health and personal care, up 3.5% and tobacco and alcohol, up 1.0%.

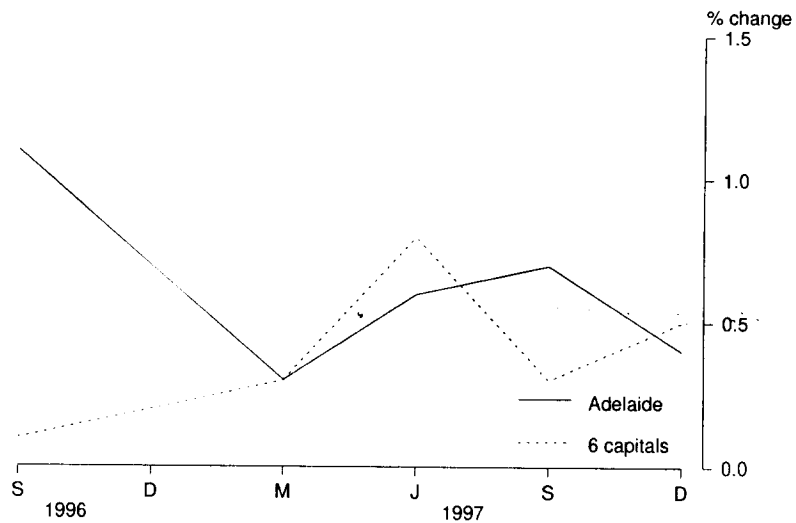
Consumer price index



House building materials index

A 0.4% increase was recorded for the Price Index of Materials used in House Building in Adelaide for the December quarter 1997. The main contributors to the rise were plaster products, aluminium windows and doors and cupboards and fittings. The weighted average for the six State capitals rose 0.5% for the same period.

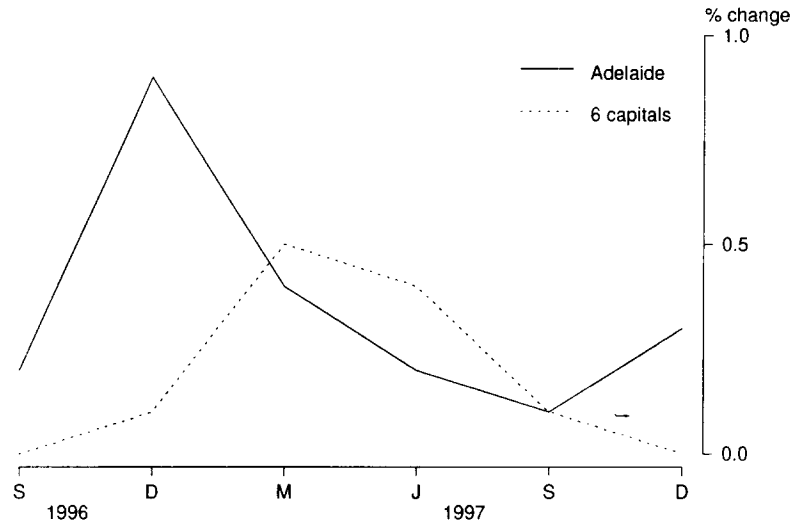
For the twelve months to December 1997, Adelaide recorded a rise of 2.1% in the Index, with the weighted average of the six State capitals rising 1.8% for the same period.



Non-house building materials index

For the December quarter 1997, the Price Index of Materials Used in Building Other than House Building rose 0.3% in Adelaide. Clay bricks, aluminium windows and non-ferrous pipes were the main contributors to the rise, with structural timber and paint recording decreases. For the same period, the weighted average of the six State capitals showed no movement.

The Index recorded a rise of 0.9% for the 12 months to December 1997, while a 1.1% rise was recorded for the weighted average of the six State capitals.



House prices indexes

During the September quarter 1997 the Price Index of Established Houses in Adelaide rose by 0.7% and the Project Home Index increased by 4.7%. The weighted average of the eight capital cities index, over the same period showed a 1.8% increase for established houses and 0.6% for project houses.

Over the year to the September quarter 1997 the Established House Price Index for Adelaide rose 1.9% whilst the Project Home Price Index increased by 0.5%. Nationally, the indexes showed 4.3% and 0.5% increases respectively.

Passenger transport cost index

The Passenger Transport Cost Index measures changes in the costs of operating a public transport passenger bus service in Adelaide. Costs covered include labour costs, leasing charges, registration and insurance, repairs and maintenance, fuel and overheads. The index has been compiled on a quarterly basis from September 1995 with a base of 100.0 in 1993-94. The December quarter 1997 index was 108.3, a 0.1% increase from the September quarter 1997. The index showed a 0.5% increase in the 12 months to December 1997.

LABOUR FORCE AND DEMOGRAPHY

Population

At 30 June 1997 the estimated resident population of South Australia was 1,479,806. This was an increase of 1,864 persons from the March quarter and was due to a natural increase of 2,023 persons partly offset by a net migration loss of 159 persons.

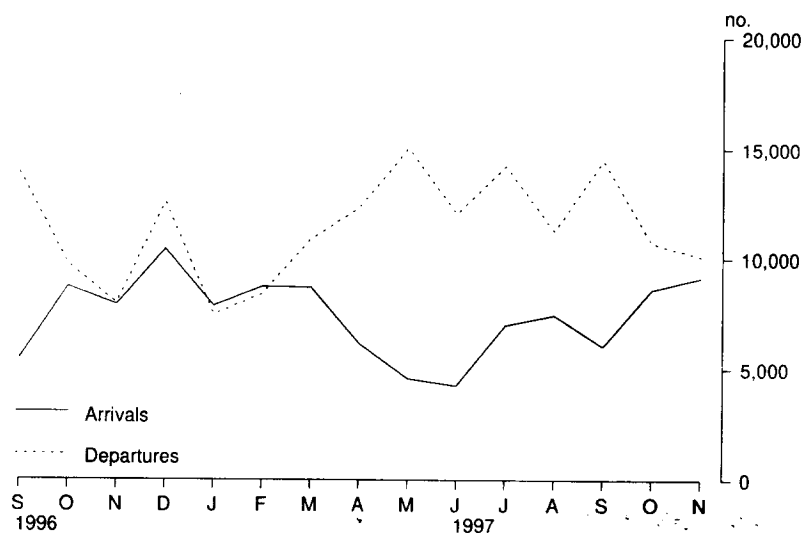
Short-term overseas visitor arrivals

In November 1997 there were 9,138 short-term overseas visitor arrivals to South Australia, an increase of 5.8% on October 1997 and 15.0% on the previous year. Australia also experienced an increase in visitor arrivals when compared with the same periods, up 3.5% and 1.0% respectively. The South Australian share of short term overseas visitor arrivals was unchanged from last month at 2.4%.

Short-term resident departures

There were 10,115 short-term resident departures in November 1997. This represents a fall of 5.4% from last month and a 26.6% rise on November 1996. Australian results show a 1.8% fall from October 1997 and a 6.5% increase from the same time last year. South Australia accounted for 4.4% of short-term resident departures.

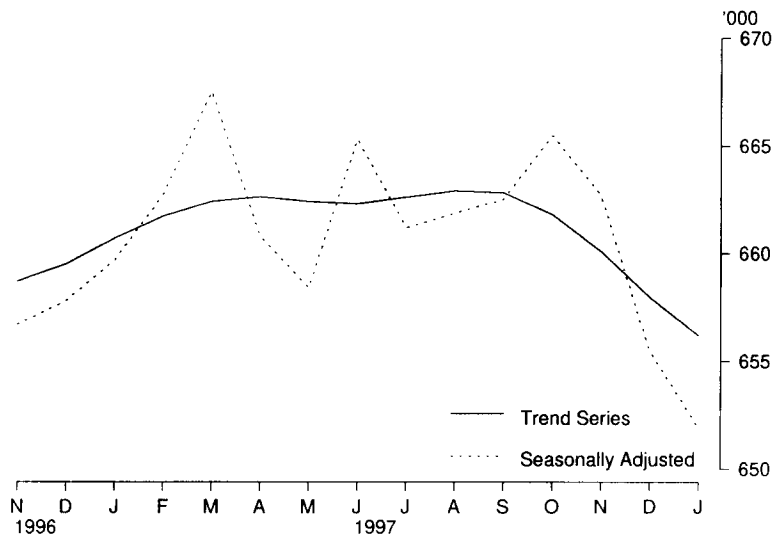
Short-term arrivals and departures



Employment

The trend estimate of employed persons in South Australia was 656,200 in January 1998, 0.7% lower than the level of 12 months ago (660,700).

Employed persons



Unemployment

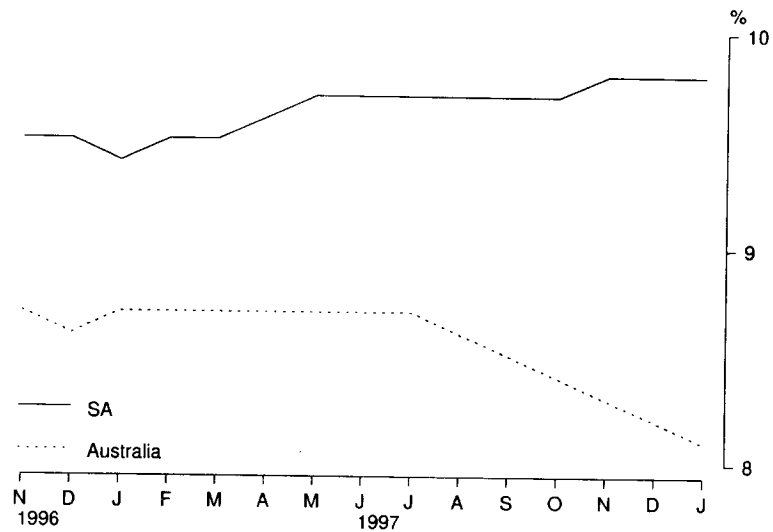
The trend unemployment rate for South Australia has generally risen over the past 12 months; up from 9.4% in January 1997 to 9.8% in January 1998.

In January 1998, the median duration of unemployment (one half of all observations lie above this value, and the other half below) in South Australia was 25 weeks, higher than the 19 weeks recorded 12 months ago.

In original terms, the teenage full-time unemployment rate in South Australia was 32.5% in January 1998, down from the 35.0% recorded in December 1997. The current level is lower than the April 1997 high of 42.1%.

The trend estimate of the unemployment rate for Australia has decreased for six consecutive months, reaching 8.1% in January 1998. This is considerably lower than the 8.7% recorded 12 months earlier.

Unemployment rates: **Trend**

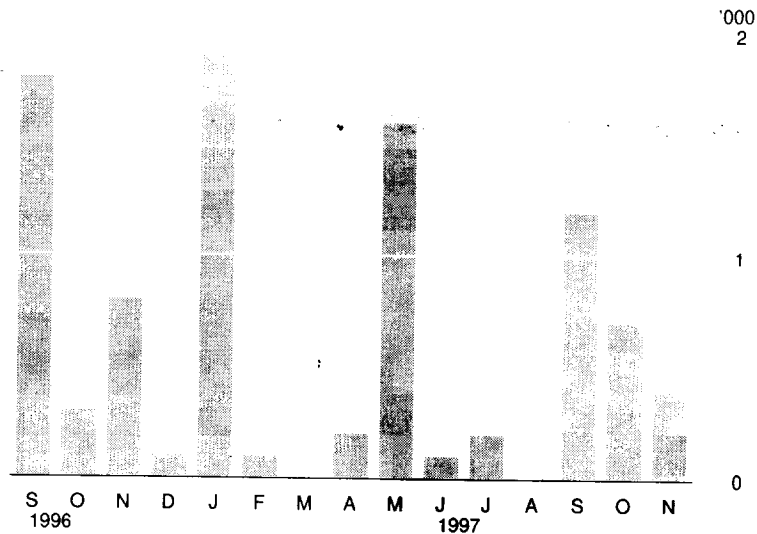


Industrial disputes

There were 400 working days lost through industrial disputes during November 1997, down from the 700 days recorded in the previous month. At less than one percent of the national level for November 1997 (56,300 working days lost) South Australia had a very low level of industrial disputation.

The number of working days lost in South Australia in the 12 months to November 1997 was 7,700, much lower than the 41,600 days lost in the 12 months to November 1996.

Working Days Lost



Overtime

In original terms, the proportion of employees who worked overtime in November 1997 was 15.0%. The same percentage was recorded in November 1996.

In November 1997, employees who worked overtime recorded an average of 6.5 overtime hours per week. This was slightly higher than the 6.4 overtime hours recorded 12 months earlier.

INCOMES

Average weekly earnings

The trend estimate of average weekly ordinary time earnings of full-time adult male employees in South Australia has increased by 1.4% from \$693.10 in May 1997 to \$703.00 in August 1997. For females, the corresponding increase was less pronounced at 0.3% from \$582.30 in May 1997 to \$584.10 in August 1997.

Between May 1997 and August 1997, the trend estimate of average weekly total earnings of all employees (including part-time workers) in South Australia rose by 1.6% to \$545.70. Over the same period, the national level increased by 0.6% to \$583.60.

Note: Since it is an average of earnings across all employees, changes in average weekly earnings may occur through changes in employment as well as changes in pay levels.

Award rates of pay

In the 12 months to June 1997, the weekly award rates of pay index for full-time employees in both South Australia and Australia increased by 1.4%.

For both full-time adult male and female employees in South Australia, the largest annual movement in the index occurred in Manufacturing, with increases of 2.0% and 6.8% respectively. In contrast, for the Communication industry, both sexes recorded no movement in the index.

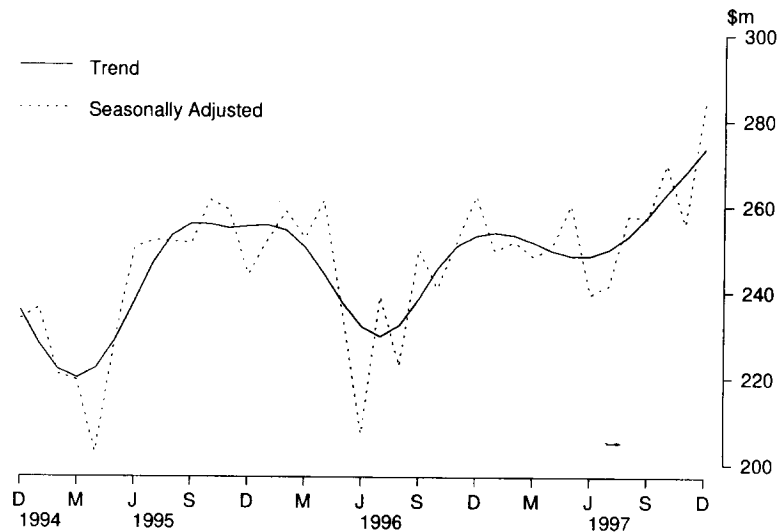
Note: June was the last month of issue of this index. It will be replaced by a wage costs index, due for release in May 1998 and covering the December 1997 quarter. Non-wage costs, for example fringe benefits tax and payroll tax, will be added in consecutive stages to produce a composite labour costs index. This indicator should be available in early 1999.

FINANCIAL MARKETS

Housing finance

There was a 2.1% increase in the trend estimate for the value of commitments during December. This was the sixth consecutive monthly rise from the trough which occurred in May and June. Seasonally adjusted, the value of commitments rose 11.0% to \$284.0m.

Secured housing finance commitments(a)



(a) Excludes alterations and additions. Includes refinancing.

Total housing finance commitments (original figures including alterations and additions) increased 6.6% to \$284.7m, 7.6% above the previous December. Nationally new lending commitments were down marginally from the previous month, but were still 15.1% above December 1996. The number of dwellings financed in South Australia increased 6.7% to 3,197, the average value increasing marginally to \$85,900.

Construction of dwellings increased 10.7% to \$33.5m, significantly above the corresponding month of the previous year for the ninth consecutive month. The monthly average for the year was \$32.2m, significantly above the previous two years' average. Commitments for the purchase of established dwellings, the largest category, were up 6.4% to \$158.9m. Commitments for newly erected dwellings were up 2.9% to \$9.5m.

Refinancing increased 9.1% to \$72.7m, 48.7% above December 1996 and representing 25.5% of the total new lending commitments compared with the national proportion of 15.4%. Alterations and additions decreased 12.0% to \$10.1m, with the monthly average for the year at \$12.7m, the lowest since 1993.

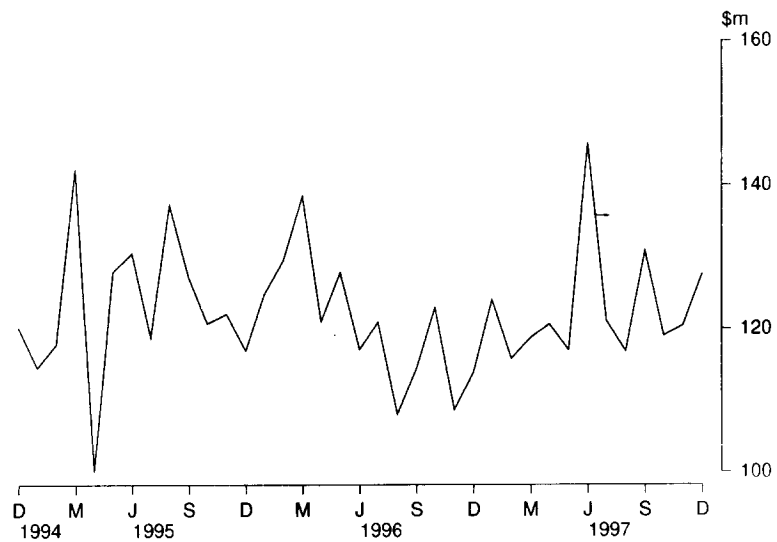
Personal finance

Total commitments increased 5.7% to \$232.8m, 22.7% above December 1996. South Australia represented 6.3% of total Australian commitments. The monthly average for the year was \$226.8m compared with \$184.5m in 1996.

South Australian fixed loan commitments increased 5.9% to \$127.7m, 12.0% above the previous December. Used motor cars and station wagons, the largest category, were up 6.1% to \$38.0m. New motor cars and station wagons increased 7.6% to \$15.9m, up 22.2% over the year. The category with the largest increase was 'other', up 28.8%. The main fall was for debt consolidation which was down 10.7% to \$10.5m.

Total revolving credit facilities increased 5.5% to \$105.1m, 38.9% above December 1996. This was due to the increase in secured revolving credit facilities, up 11.4% to \$51.1m.

Fixed loan commitments, all lenders

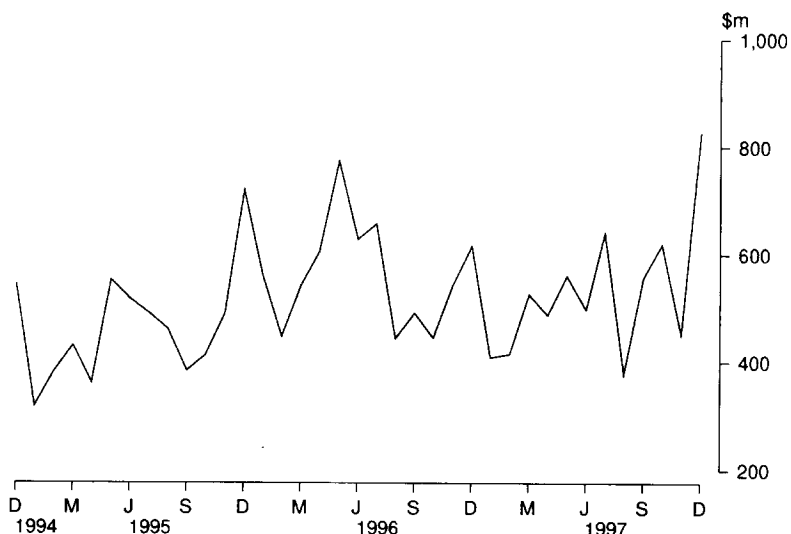


Commercial finance

Total commercial finance commitments increased 83.8% to \$827.5m, 34.4% above the previous December. Nationally the increase was 5.4% for the month, 19.5% higher over the year. South Australia's monthly average for the year was \$530.9m compared with \$562.7m in 1996. The high total lifted South Australia's proportion of the national total to 5.3% in December.

Total revolving credit increased by \$201.5m to be 25.1% higher than December 1996. The increase was largely attributable to the finance, investment and insurance category which was up \$131.2m to \$139.3m. Significant increases also occurred in agriculture, forestry, fishing and hunting (up \$13.8m), wholesale trade (up \$10.6m), property and business services (up \$10.8m) and other (up \$19.9m). The main fall was retail trade down \$4.2m to \$11.2m.

Commercial finance commitments, all lenders



Commitments under fixed loan facilities increased 53.2% to \$506.1m, 41.1% higher than the previous December. Substantial increases were recorded for mining (up \$64.1m), recreation, personal and other services (up \$45.3m) and manufacturing (up \$36.9m). The two categories to fall in December were retail trade (down \$4.8m) and other industries (down \$19.7m).

Lease finance

New finance lease commitments increased for the first time in six months, with a 12.4% rise to \$20.0m, 4.1% above the previous December. This brought the monthly average for the year to \$20.7m, continuing the downward trend of the previous two years. The national total for December increased 16.5%, to be 29.7% higher than December 1996. The state's proportion of the national total dropped to 2.6%.

The main increases were for new motor cars and station wagons not subject to depreciation (up \$1.4m), new heavy trucks (up \$1.1m following a low month), agricultural machinery and equipment (up \$1.0m) and construction and earthmoving equipment (up \$0.8 m).

Partially offsetting the increases were the drops in finance for manufacturing equipment (down \$1.0m) and office machines (down \$0.8m).

FORWARD OUTLOOK

Composite leading indicator for Australia

The Composite Leading Indicator (CLI) is a single time series produced by aggregating eight individual economic indicators, and has been developed by the ABS as an experimental series to supplement existing forms of economic analysis and modelling.

The CLI summarises the early signals contained in a selection of economic indicators and is designed to assist the detection of turning points between successive expansions and slow downs of economic activity as measured by constant price GDP(A). It does not attempt to forecast the level of economic activity.

Composite leading indicator for Australia *continued*

In the September quarter 1997 :

- the experimental CLI rose 0.03%, following rises of 0.17% and 0.13% in the March quarter 1997 and June quarter respectively.
- Of the eight components used in its compilation, four made positive contributions and three made negative contributions to the change in the September quarter 1997. The largest positive contribution continued to come from the All Industrials index component, while the largest negative contribution was from the trade factor.

The quarterly data are released in more detail in the *Australian Economic Indicators* (Cat. no. 1350.0). The CLI was the topic of the Focus article in the September 1993 edition of *South Australian Economic Indicators* (Cat. no. 1307.4). A review of the performance of the CLI and its components was published in the July 1997 issue of Cat. no. 1350.0.

Australian business expectations

Surveys of business expectations have been available to decision makers for a number of years from several sources. These surveys provided *qualitative* indicators in the form of the net proportion of businesses expecting a rise or fall in future business conditions. Since the December quarter 1993, the ABS has been compiling a *quantitative* indicator of business expectations in the form of an expected weighted aggregate change in a range of economic variables. These data are available on a quarterly basis in *Australian Business Expectations* (Cat. no. 5250.0).

Sales of goods and services, South Australia and Australia

Reference period	SHORT TERM EXPECTED AGGREGATE CHANGE BETWEEN.....		MEDIUM TERM EXPECTED AGGREGATE CHANGE BETWEEN.....	
	Sep 1997 and Dec 1997	Dec 1997 and Mar 1998	Sep 1997 and Sep 1998	Dec 1997 and Dec 1998
	%	%	%	%
South Australia	5.1	0.2	4.8	4.3
Australia	3.0	-0.3	3.9	2.9

Short term—South Australian businesses expect an increase of 0.2% in the sales of goods and services in the March quarter 1998 compared with the December quarter 1997. All other States (except the Northern Territory) expect a fall in the sales of goods and services, with Australia expecting a 0.3% decline.

Medium term—Businesses in South Australia expect sales of goods and services in the December quarter 1998 to be 4.3% above December quarter 1997, the highest of all States and Territories. The largest expected increases for South Australia were in Mining (15.7%) and Finance and Insurance (5.8%). The expectation for Australian sales of goods and services was a growth of 2.9%.

INTRODUCTION

South Australia continues to be the dominant State in the Australian wine industry. From the 1997 harvest, the State produced 369,237 tonnes of grapes (39.5% of the Australian total) and 49.2% of all grapes used for winemaking. South Australia also produced 47.8% (271.1 million litres) of the total volume of Australian beverage wine. South Australian wineries crushed 389,275 tonnes of grapes in 1997, which includes some grapes grown in regions outside the State. This crush represents nearly half the Australian total. Beverage wine production in South Australia is 45.7% greater than in New South Wales and 174.6% greater than in Victoria. South Australia exported a record 124.6 million litres of wine in 1997, 72.9% of total Australian exports of wine.

VITICULTURE

Preliminary results for the 1997 grape harvest show South Australia was the major State for new plantings, accounting for 47.4% of the 17,024 hectares of not yet bearing vines. South Australia also had the largest total area of vines in Australia with 37,736 hectares. All other States increased their total area of vines during 1996, resulting in a record 88,474 hectares of grapevines in Australia.

Area and Production of Vineyards, Harvest 1997p

	Red grapes	White grapes	Total	South Australia as a proportion of Australia
AREA OF VINES AT HARVEST				
	ha	ha	ha	%
Bearing	15 629	14 036	29 665	41.5
Not yet bearing				
Planted or grafted prior to 1996	3 175	1 470	4 645	50.5
Planted or grafted during 1996	2 509	917	3 426	43.8
Total	21 313	16 423	37 736	42.7
GRAPE PRODUCTION				
	t	t	t	%
Winemaking	164 995	197 481	362 475	49.2
Drying	2 401	1 830	4 230	3.1
Table and other	781	1 750	2 532	4.0
Total	168 177	201 060	369 237	39.5

The 1997 Australian grape harvest of 934,511 tonnes was down on the record production of last year. Decreases in total grape production were recorded in all States with the exception of Queensland. Victoria accounted for the majority of the decrease, falling by 23.6%, from 427,002 tonnes to 326,424 tonnes, while South Australia's harvest dropped by 9.2%, from 406,832 tonnes to 369,237 tonnes. As a result South Australia regained its position as the largest total grape producing State. Victoria was the next largest producer accounting for 34.9% of all grapes harvested.

VITICULTURE *continued*

South Australia produced 59.6% of the Australian total of 282,336 tonnes of red grapes with the largest contributing areas being the South Eastern, Central and North Murray Districts. South Australia produced 30.8% of all white grapes.

Area of Vines Planted or Grafted During 1996p

	<i>Red grapes</i>	<i>White grapes</i>	<i>Total</i>	<i>Total area of vines at 1997 harvest</i>
<i>Phylloxera District</i>	ha	ha	ha	ha
Central	533	141	674	6 754
Barossa	274	72	346	6 899
Riverland (a)	912	435	1 348	13 502
Northern	174	65	238	2 525
South Eastern	616	205	820	8 056
Total South Australia	2 509	917	3 426	37 736
Total Australia	5 037	2 788	7 825	88 474

(a) Includes Waikerie and Lower Murray, North Murray and South Murray Districts.

Preliminary results indicate the area of vines planted or grafted in South Australia during 1996 rose by 3.5% from 1995. The new plantings and graftings were predominantly red grapes accounting for 73.2% of the total area. Winemaking consumes 98.2% of total South Australian grape production.

The increases in red grape vines were recorded in the Central District (28.7%), South Eastern District (20.8%) and the Riverland (42.1%). Two other Districts recorded a fall on 1995 plantings with the Barossa District down 2.5% and the Northern District down 33.1%.

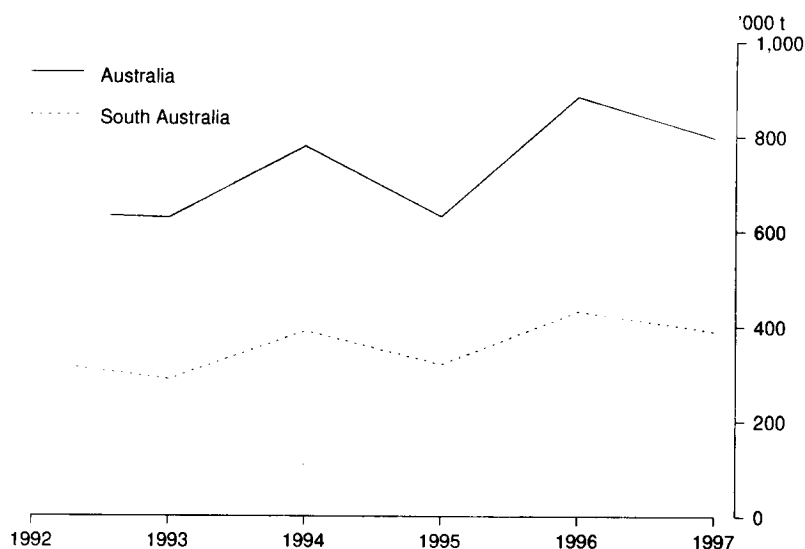
There was an overall decrease of 26.8% in the new planting or grafting of white grape vines when compared with 1995. Falls were recorded in all Districts except the Northern District which rose by 66.7%.

Grape growers in South Australia reported that they intended to plant or graft 2,572 hectares of vines during 1997, 43.6% of all intended plantings in Australia. The majority (87.4%) of new plantings are for red grape vines.

GRAPES CRUSHED

The 389,275 tonnes of grapes crushed in South Australia for the 1997 vintage was nearly half of the Australian total. The State total comprised 221,104 tonnes of white grapes and 168,171 tonnes of red grapes representing 41.5% and 63.3% of the respective Australian totals.

Fresh Grapes Crushed (a)



(a) Winemakers crushing 50 tonnes or more.

All major wine producing areas in South Australia reported decreases in the quantity of grapes crushed in 1997. The Riverland region in South Australia crushed more grapes than any other Australian wine region.

The Barossa District was again the top Australian wine region in terms of the volume of wine produced, accounting for 21.2% of Australian wine production for the 1997 vintage.

WINE PRODUCTION

In 1997, South Australia's total beverage wine production fell to 271.1 million litres representing 47.8% of the Australian total of 566.8 million litres. South Australia contributed 60.1% (17.2 million litres) of the total Australian fortified wine production of 28.7 million litres, and 47.2% (253.9 million litres) of Australia's total unfortified wine (538.1 million litres).

Grapes Crushed and Wine Production, 1997 Vintage(a)

Phylloxera District	Grapes crushed t	Beverage wine production '000 L
Central	41 773	30 412
Barossa	126 149	120 097
Riverland(b)	165 210	92 119
Northern	12 172	7 217
South Eastern	37 670	21 234
Total South Australia	382 974	271 080
Total Australia	778 562	566 779

(a) Winemakers crushing more than 400 tonnes.

(b) Includes Waikerie and Lower Murray, North Murray and South Murray Districts.

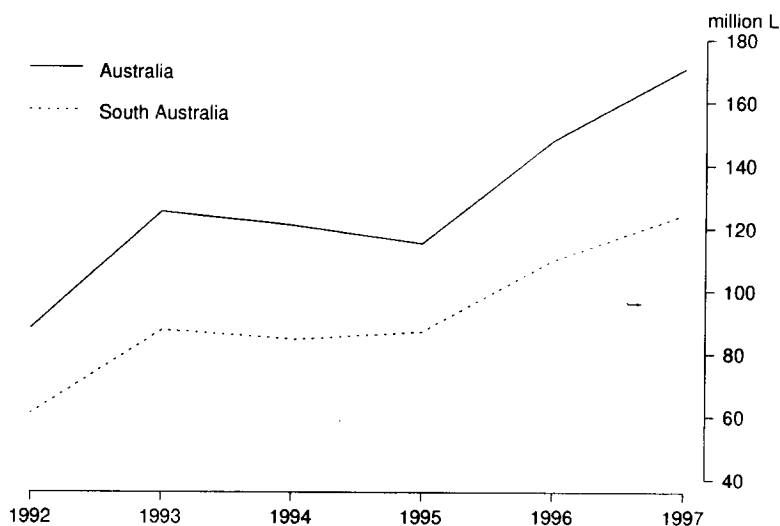
WINE PRODUCTION *continued*

South Australia continued to be the main producer of brandy and grape spirit for Australia, producing 99.0% of the 0.8 million litres of Australian brandy and 67.7% of the 5.7 million litres of Australian grape spirit produced in 1997.

EXPORTS

South Australia exported a record 124.6 million litres of wine in 1997, an increase of 13.3% on the previous record (109.9 million litres) in 1996. This represented 72.9% of the total Australian volume (170.8 million litres). In terms of value, South Australian wine exports contributed \$464.7 million towards the record Australian total of \$721.3 million.

Australian Wine Exports



As the following table indicates, South Australia's contribution to each main market in terms of volume of wine exports does not always equate to the same share of the value of these export markets. (e.g. South Australia contributes 82.9% of all Australian wine exported to New Zealand but this only represents 69.0% in terms of the value of these exports to Australia.)

Wine exports by Country of Destination—1997

Country	Quantity of wine	South Australia as a proportion of Australia	Value of wine	South Australia as a proportion of Australia
	'000 L	%	\$'000	%
United Kingdom	61 326	78.3	233 781	74.8
New Zealand	16 577	82.9	32 892	69.0
United States of America	15 736	59.1	73 794	48.1
Canada	4 502	63.9	20 588	63.5
Sweden	3 164	91.9	10 608	90.3
Ireland	2 708	70.1	10 293	60.6
Germany	2 227	64.8	8 333	57.1
Other countries	18 332	65.7	74 400	56.9
All countries	124 571	73.0	464 685	64.6

Export approval data from the Australian Wine Export Council indicates that the increase in Australian wine export approvals for 1997 came predominately from an increase in bottled wine sales.

Bottled red and white wines accounted for 81.5% of the 23.7-million litres increase on 1996 export approvals, and 75.1% (129.1 million litres) of the total 1997 Australian wine export approvals (171.9 million litres).

Bottled red wine export approvals increased from 34.3% of the total export approvals in 1995 to 37.9% in 1997 and they now exceed bottled white wine export approvals which represented 37.2% of total approvals in 1997.

DOMESTIC WINE SALES

Data relating to domestic sales of Australian produced wine are collected at the Australian level only. In 1997, a record 337.0 million litres of Australian produced wine was sold by winemakers, an increase of 4.1% on the previous year. Sales of Australian wine are dominated by table wine with 274.1 million litres being sold, an increase of 5.6%. This increase was largely due to a rise in the sales of red table wine to a record of 84.3 million litres, up 13.6 million litres on 1996. In contrast, white table wine sales rose 0.6% over this period, although they still accounted for more than two-thirds of table wine sales.

1998 VINTAGE

The Australian Bureau of Agricultural and Resource Economics (ABARE) project that the total Australian winegrape production for the 1998 grape harvest will be 899,000 tonnes. This projection is based on average yields but early indications from some sources suggest above average yields can be expected in most areas. This would result in a production exceeding 900,000 tonnes and eclipse the previous record of 883,318 tonnes in 1996.

REFERENCES

Australian Wine and Grape Industry, 1997 (Cat. no. 1329.0)
Sales of Australian Wine and Brandy by Winemakers (Cat. no. 8504.0)
Wine Export Approval Report, December 1997, The Australian Wine Export Council (AWEC),
Projections of Wine Grape Production and Winery Intake to 1999–2000, ABARE Research Report 97.10.

FURTHER INQUIRIES

Further information pertaining to this article can be obtained by contacting Peter Carmalt on (08) 8237 7632.

LIST OF TABLES



Page

TABLES

1	Statistical summary	28
	Time series	
2	State accounts—current prices	30
3	State accounts—average 1989–90 prices	31
4	Merchandise exports by selected commodity group	32
5	Merchandise exports by selected countries	33
6	Merchandise exports by industry of origin	34
7	Merchandise imports by selected commodity group	35
8	Turnover of retail establishments by industry	36
9	New motor vehicle registrations by type of vehicle	37
10	Actual private new capital expenditure by selected industry and type of asset	38
11	Tourist accommodation	39
12	Building approvals	40
13	Building commencements	41
14	Value of building work done during period	42
15	Production, livestock products and selected commodities	43
16	Consumer price index, by group—Adelaide	44
17	Average retail prices of selected consumer items—Adelaide	45
18	Estimated resident population and components of population change	46
19	Civilian labour force status	47
20	Civilian labour force, unemployment and participation rates	48
21	Average weekly earnings of employees	49
22	Finance commitments	50



SOUTH AUSTRALIA.....

AUSTRALIA.....

Indicator	Unit	Period	Number	% change from ...		Number	% change from		SA as a % of Aust.	Source index
				Previous period	Same period previous year		Previous period	Same period previous year		
State accounts										
Domestic final demand										
Current prices trend	\$m	Sep qtr 97	9 370	2.4	6.1	130 607	1.6	5.2	7.2	(1)
1989-90 prices trend	\$m	Sep qtr 97	8 058	2.0	5.1	114 301	1.3	5.2	7.0	(1)
Private final consumption expenditure										
Current prices trend	\$m	Sep qtr 97	6 026	2.2	5.2	81 153	1.4	4.8	7.4	(1)
1989-90 prices trend	\$m	Sep qtr 97	5 095	1.9	3.9	68 509	1.1	3.3	7.4	(1)
Private gross fixed capital expenditure										
Current prices trend	\$m	Sep qtr 97	1 338	7.2	11.0	22 301	3.6	7.7	6.0	(1)
1989-90 prices trend	\$m	Sep qtr 97	1 273	6.3	10.4	22 449	4.2	13.9	5.7	(1)
Wages, salaries and supplements										
Current prices trend	\$m	Sep qtr 97	4 558	0.6	2.5	65 546	0.8	4.2	7.0	(1)
International accounts										
Exports	\$m	Dec 97	482.5	6.6	-7.5	7 480.4	2.3	15.8	6.5	(2)
Imports	\$m	Dec 97	342.0	6.2	10.2	7 924.7	10.1	18.4	4.3	(2)
Consumption and investment										
Retail turnover										
Current prices original	\$m	Dec 97	1 066.5	24.5	3.3	14 591.4	27.0	5.9	7.3	(3)
Current prices trend	\$m	Dec 97	819.2	0.0	4.5	11 211.0	0.1	4.7	7.3	(3)
1989-90 prices original	\$m	Dec qtr 97	2 304.0	17.8	4.8	31 290.0	15.9	4.3	7.4	(3)
New motor vehicle registrations										
Original	no.	Dec 97	4 483	6.8	25.2	67 928	10.5	24.4	6.6	(4)
Trend	no.	Dec 97	4 336	2.2	22.0	64 593	1.1	17.7	6.7	(4)
Private new capital expenditure										
Current prices original	\$m	Sep qtr 97	718	-0.7	11.0	10 601	-10.9	3.1	6.8	(5)
Current prices trend	\$m	Sep qtr 97	758	10.7	22.7	11 132	-0.4	1.8	6.8	(5)
Private new capital expenditure	\$m	1996-97	2 580	..	37.7	43 837	..	8.3	5.9	(5)
Takings, licensed hotels, motels and guesthouses with facilities	\$m	Sept qtr 97	41.7	3.4	11.1	949.7	11.3	5.9	4.4	(6)
Production										
Dwelling unit approvals										
Original	no.	Dec 97	513	-7.1	25.1	12 265	-6.2	24.6	4.2	(7)
Trend	no.	Dec 97	559	0.5	15.7	13 190	1.9	15.5	4.2	(7)
New dwelling units commenced	no.	Sep qtr 97	1 509	-10.8	14.2	34 335	0.0	13.3	4.4	(8a)
Value of non-residential building approvals	\$m	Dec 97	35.1	-45.6	25.2	1 028.9	3.7	6.3	3.4	(7)
Value of total building activity										
Commenced	\$m	Sep qtr 97	257.7	-36.9	7.8	7 819.1	6.2	20.0	3.3	(8)
Work done	\$m	Sep qtr 97	349.7	-1.7	23.5	7 648.0	5.5	9.5	4.6	(8)
Work yet to be done	\$m	Sep qtr 97	309.1	-20.9	-23.0	11 246.1	5.6	19.7	2.7	(8)
Value of engineering construction work done	\$m	Sep qtr 97	255.5	-16.9	69.0	3 755.0	-12.0	-1.1	6.8	(9)
Manufacturing production										
Red meat	tonnes	Dec 97	16 348	-16.9	3.6	230 056	-5.7	16.3	7.1	(11)
Mineral exploration expenditure (other than for petroleum)	\$m	Sept qtr 97	12.5	-13.8	131.5	301.8	-13.1	10.1	4.1	(12)

Indicator	Unit	Period	SOUTH AUSTRALIA.....			AUSTRALIA.....			SA as a % of Aust.	Source index
			Number	% change from....		Number	% change from			
				Previous period	Same period previous year		Previous period	Same period previous year		
Prices										
CPI - All groups	1989-90=100	Dec qtr 97	121.2	0.0	-1.1	120.0	0.3	-0.2	..	(13)
Price index of materials used in house building	1989-90=100	Dec qtr 97	122.9	0.4	2.1	117.9	0.5	1.8	..	(14)
Price index of materials used in building other than houses	1989-90=100	Dec qtr 97	115.1	0.3	0.9	114.0	0.0	1.1	..	(15)
Price index of established houses	1989-90=100	Sep qtr 97	109.8	0.7	1.9	118.9	1.8	4.3	..	(16)
Price index of project homes	1989-90=100	Sep qtr 97	111.9	4.7	0.5	109.9	0.6	0.5	..	(16)
Labour force and demography										
Population (resident at end qtr)	'000	Jun qtr 97	1 479.8	0.1	0.4	18 532.2	0.2	1.2	8.0	(17)
Short-term overseas visitors arrivals	no.	Nov 97	9 138	5.8	15.0	379 456	3.5	1.0	2.4	(21)
Short-term resident departures	no.	Nov 97	10 115	-5.4	26.6	232 491	-1.8	6.5	4.4	(21)
Labour force										
Original	'000	Jan 98	722.1	-1.8	-0.3	9 203.2	-1.9	0.6	7.8	(18)
Trend	'000	Jan 98	727.7	-0.2	-0.2	9 283.0	0.1	0.9	7.8	(18)
Employed persons										
Original	'000	Jan 98	643.3	-3.2	-1.2	8 386.3	-2.7	1.1	7.7	(18)
Trend	'000	Jan 98	656.2	-0.3	-0.7	8 526.6	0.2	1.4	7.7	(18)
Participation rate										
Original(a)	%	Jan 98	60.7	-1.2	-0.7	62.7	-1.2	-0.5	..	(18)
Trend(a)	%	Jan 98	61.2	-0.2	-0.6	63.2	0.0	-0.4	..	(18)
Unemployment rate										
Original(a)	%	Jan 98	10.9	1.2	0.7	8.9	0.8	-0.4	..	(18)
Trend(a)	%	Jan 98	9.8	0.0	0.4	8.1	-0.1	-0.6	..	(18)
Job vacancies										
Average weekly overtime per employee working overtime	hours	Nov 97	6.5	8.1	1.4	7.0	6.9	-2.0	..	(19)
	'000 working days lost	Nov 97	0.4	-42.9	-50	56.3	-38.5	22.4	0.7	(20)
Incomes										
Average weekly earnings (full-time adults; ordinary time)										
Original	\$	Aug 97	663.40	1.2	4.9	706.60	1.4	4.4	..	(22)
Trend	\$	Aug 97	663.40	1.1	4.4	706.00	1.1	4.0	..	(22)
Award rates of pay index (full-time adults, weekly)										
	Jun 1985=100	June 97	151.8	0.4	1.4	149.2	0.2	1.4	..	(23)
Financial markets										
Secured housing finance										
Finance commitments										
Personal	\$m	Dec 97	284.7	6.6	7.6	4 681.3	0.0	15.1	6.1	(24)
Commercial	\$m	Dec 97	827.5	83.8	34.4	15 476.9	5.4	19.5	5.3	(25)
Lease	\$m	Dec 97	20.0	12.4	4.1	772.0	16.5	29.7	2.6	(25)
Interest rates										
Banks new housing loans(a)	%	Dec 97	6.7	0.0	-1.6	..	(26)
Banks business loans(a)										
Small, medium sized business	%	Dec 97	8.8	0.0	-1.0	..	(26)
Large business	%	Dec 97	8.4	0.0	-0.9	..	(26)

(a) Change is shown in terms of percentage points.

Period	FINAL CONSUMPTION EXPENDITURE....		GROSS FIXED CAPITAL EXPENDITURE....		State final demand	Gross State product (I)	Wages, salaries and supplements
	Private	Government	Private	Government			
ANNUAL (\$m)							
1991-92	18 958	5 812	4 021	1 429	30 220	28 719	14 718
1992-93	19 493	5 969	3 980	1 372	30 814	29 989	15 131
1993-94	20 390	6 656	4 020	1 149	32 216	32 057	16 372
1994-95	21 562	6 698	4 913	1 232	34 404	33 437	16 720
1995-96	22 767	6 734	4 321	1 073	34 896	35 457	17 437
1996-97	23 081	6 858	4 713	1 175	35 827	36 023	17 938
PERCENTAGE CHANGE FROM PREVIOUS YEAR							
1991-92	4.6	6.1	-5.0	-6.5	2.9	1.0	-0.2
1992-93	2.8	2.7	-1.0	-4.0	2.0	4.4	2.8
1993-94	4.6	11.5	1.0	-16.3	4.5	6.9	8.2
1994-95	5.7	0.6	22.2	7.2	6.8	4.3	2.1
1995-96	5.6	0.5	-12.0	-12.9	1.4	6.0	4.3
1996-97	1.4	1.8	9.1	9.5	2.7	1.6	2.9
QUARTERLY, ORIGINAL (\$m)							
1995-96							
June	5 661	1 716	1 116	366.0	8 859	8 724	4 432
1996-97							
September	5 708	1 694	1 139	226.0	8 767	8 534	4 418
December	6 058	1 725	1 242	271.0	9 296	9 849	4 609
March	5 540	1 592	1 006	332.0	8 470	8 634	4 385
June	5 776	1 847	1 326	346.0	9 295	9 006	4 526
1997-98							
September	6 097	1 751	1 297	242.0	9 388	n.a.	4 588
QUARTERLY, TREND (\$m)							
1995-96							
June	5 707	1 678	1 112	276	8 774	8 894	4 398
1996-97							
September	5 729	1 681	1 124	295	8 829	8 909	4 447
December	5 746	1 700	1 138	309	8 893	8 976	4 495
March	5 792	1 718	1 170	304	8 984	9 049	4 513
June	5 894	1 726	1 248	284	9 152	9 116	4 531
1997-98							
September	6 026	1 736	1 338	270	9 370	n.a.	4 558
PERCENTAGE CHANGE FROM PREVIOUS QUARTER, TREND							
1995-96							
June	0.2	-0.5	2.8	0.0	0.4	-0.2	0.5
1996-97							
September	0.4	0.2	1.1	6.9	0.6	0.2	1.1
December	0.3	1.1	1.2	4.7	0.7	0.8	1.1
March	0.8	1.1	2.8	-1.6	1.0	0.8	0.4
June	1.8	0.5	6.7	-6.6	1.9	0.7	0.4
1997-98							
September	2.2	0.6	7.2	-4.9	2.4	..	0.6

Period	FINAL CONSUMPTION EXPENDITURE....		GROSS FIXED CAPITAL EXPENDITURE....		State final demand	Gross State product (I)
	Private	Government	Private	Government		
ANNUAL (\$m)						
1991-92	17 447	5 328	3 849	1 364	27 988	27 023
1992-93	17 491	5 358	3 696	1 292	27 837	28 077
1993-94	18 045	5 668	3 653	1 082	28 448	29 004
1994-95	18 901	5 778	4 396	1 147	30 222	29 226
1995-96	19 606	5 698	3 903	1 006	30 213	30 465
1996-97	19 672	5 735	4 560	1 092	31 059	30 868
PERCENTAGE CHANGE FROM PREVIOUS YEAR						
1991-92	1.6	2.3	-6.0	-7.8	1.4	-2.4
1992-93	0.3	0.6	-4.0	-5.3	-0.5	3.9
1993-94	3.2	5.8	-1.2	-16.3	2.2	3.3
1994-95	4.7	1.9	20.3	6.0	6.2	0.8
1995-96	3.7	-1.4	-11.2	-12.3	0.0	4.2
1996-97	0.3	0.6	16.8	8.5	2.8	1.3
QUARTERLY, ORIGINAL (\$m)						
1995-96						
June	4 866	1 432	1 026	340	7 664	7 437
1996-97						
September	4 888	1 428	1 108	211	7 635	7 363
December	5 165	1 433	1 221	252	8 071	8 701
March	4 702	1 336	969	306	7 313	7 280
June	4 917	1 538	1 262	323	8 040	7 524
1997-98						
September	5 153	1 444	1 245	214	8 056	n.a.
QUARTERLY, TREND (\$m)						
1995-96						
June	4 900	1 405	1 040	257	7 602	7 679
1996-97						
September	4 904	1 408	1 084	274	7 670	7 706
December	4 900	1 425	1 108	288	7 721	7 717
March	4 926	1 438	1 133	282	7 779	7 701
June	5 002	1 440	1 197	261	7 900	7 662
1997-98						
September	5 095	1 446	1 273	244	8 058	n.a.
PERCENTAGE CHANGE FROM PREVIOUS QUARTER, TREND						
1995-96						
June	0.1	-0.8	6.3	-1.2	0.7	0.2
1996-97						
September	0.1	0.2	4.2	6.6	0.9	0.4
December	-0.1	1.2	2.2	5.1	0.7	0.1
March	0.5	0.9	2.3	-2.1	0.8	-0.2
June	1.5	0.1	5.6	-7.4	1.6	-0.5
1997-98						
September	1.9	0.4	6.3	-6.5	2.0	..

4

MERCHANDISE EXPORTS, By Selected Commodity Group(a)

Period	Meat and meat preparations \$'000	Cereals and cereal preparations \$'000	Wine \$'000	Wool and sheepskins \$'000	Machinery \$'000	Metals and metal manu- factures \$'000	Fish and crustaceans \$'000	Road vehicles, parts and accessories \$'000	Petroleum and petroleum products \$'000	Total \$'000
ANNUAL										
1991-92	270 237	565 582	165 914	351 096	176 536	489 030	147 532	137 091	341 477	3 431 139
1992-93	282 181	573 375	192 255	318 989	211 426	490 594	154 608	338 359	372 445	3 760 602
1993-94	324 796	436 517	238 366	290 963	223 760	462 355	186 861	351 229	276 473	3 889 783
1994-95	307 785	261 052	250 527	301 645	285 309	571 094	191 386	332 321	285 310	3 829 336
1995-96	244 508	713 092	318 534	240 148	340 205	610 899	196 629	249 237	220 915	4 498 532
1996-97	182 478	745 241	397 949	260 974	378 918	542 204	191 072	655 895	286 458	5 013 442
MONTHLY										
1996-97										
October	14 922	44 586	40 663	22 285	26 217	46 325	16 063	75 999	20 187	425 409
November	18 388	23 261	25 814	22 961	32 122	46 400	16 170	99 763	41 799	443 477
December	21 065	85 128	34 865	30 635	45 346	60 849	16 009	70 076	17 719	521 428
January	13 701	108 010	21 366	18 392	17 653	33 405	20 477	46 808	4 275	379 289
February	17 065	124 924	30 844	22 350	27 097	39 512	20 942	58 234	46 498	511 223
March	17 492	118 000	34 185	22 682	39 619	46 802	23 664	58 579	25 712	507 198
April	17 415	61 511	34 047	25 234	31 992	39 508	19 935	45 176	26 197	416 470
May	16 003	16 145	36 804	26 233	35 382	55 444	15 449	39 711	15 488	367 826
June	15 421	18 998	30 160	23 847	29 641	47 560	11 051	57 089	36 706	406 373
1997-98										
July	12 693	18 848	38 625	31 249	41 558	47 372	16 678	53 331	14 509	417 206
August	11 641	18 718	44 669	17 560	31 082	43 635	18 804	60 483	39 320	419 411
September	15 521	27 719	62 570	23 860	38 659	50 905	18 769	18 938	26 927	382 878
October	17 431	10 488	62 229	23 418	26 461	37 876	23 608	39 337	10 935	360 683
November	21 107	8 739	33 299	28 693	40 989	61 842	18 009	84 083	17 541	452 475
December	21 756	67 164	35 887	34 759	38 843	40 477	13 655	72 147	37 367	482 542

(a) Final stage of production in South Australia.

5

MERCHANDISE EXPORTS, By Selected Countries(a)

Period	EUROPEAN COMMUNITY.....				EAST ASIA.....					
	United States of America	Middle East	United Kingdom	Total European Community	New Zealand	Japan	China	Hong Kong	ASEAN	Total East Asia
	\$'000	\$'000	\$'000	\$'000	\$'000	\$'000	\$'000	\$'000	\$'000	\$'000
ANNUAL										
1991-92	300 139	381 761	220 048	550 258	214 522	647 674	148 308	108 583	437 670	1 627 108
1992-93	352 764	314 049	237 520	594 701	288 421	649 684	208 135	171 803	487 174	1 820 065
1993-94	393 611	280 499	263 092	571 047	311 999	625 481	220 211	165 163	533 977	1 898 975
1994-95	329 878	184 342	246 118	553 051	376 262	682 937	177 875	193 014	551 433	2 004 013
1995-96	279 555	525 348	287 727	691 996	376 628	672 885	293 360	202 307	572 529	2 057 945
1996-97	707 871	563 409	304 647	641 313	382 102	612 115	244 917	234 546	615 018	2 034 487
MONTHLY										
1996-97										
October	74 338	30 300	28 488	58 604	40 477	67 681	20 077	12 600	45 513	173 485
November	100 612	23 047	32 472	56 564	33 279	57 312	17 778	27 444	64 655	189 397
December	71 258	81 329	28 905	65 684	27 378	59 114	29 176	21 721	47 761	186 464
January	47 334	83 789	13 228	29 012	32 659	31 483	17 714	16 327	28 376	119 338
February	57 587	66 413	22 843	49 748	29 728	56 641	27 861	23 395	75 021	209 483
March	69 002	96 254	26 863	67 132	28 321	59 413	22 364	26 579	39 860	182 126
April	59 320	49 119	26 023	52 789	22 885	51 075	33 261	18 598	61 197	185 838
May	49 537	30 815	26 604	63 287	21 142	47 286	17 553	16 373	50 567	166 869
June	83 248	19 843	21 783	60 136	21 859	56 675	15 479	17 994	59 211	180 155
1997-98										
July	75 629	33 014	27 348	60 342	25 538	52 568	31 626	15 779	55 728	188 841
August	80 052	22 224	43 757	72 636	22 840	51 202	21 497	16 567	56 418	175 270
September	25 569	14 786	43 947	79 167	31 036	64 645	22 139	22 130	53 486	182 350
October	26 276	10 479	55 170	89 887	41 159	52 524	27 449	10 146	41 821	149 608
November	92 657	20 046	26 755	56 814	26 465	64 207	33 253	27 777	65 227	222 690
December	79 791	41 314	27 740	60 112	17 339	53 288	33 256	25 072	56 078	199 552

(a) Final stage of production in South Australia.

MANUFACTURING.....

Period	Agriculture, forestry and fishing	Mining	Food, beverages and tobacco	Petroleum, coal, chemical associated product	Metal product	Machinery and equipment	Other manu- facturing	Other industries/ confidential	Total
	\$'000	\$'000	\$'000	\$'000	\$'000	\$'000	\$'000	\$'000	\$'000
ANNUAL									
1991-92	882 011	248 846	702 148	201 681	541 522	381 737	178 485	294 709	3 431 139
992-93	883 725	294 586	766 518	195 387	509 303	641 930	178 726	290 427	3 760 602
993-94	733 014	245 247	884 737	180 147	475 060	665 066	208 573	497 938	3 889 783
994-95	592 129	268 537	886 337	186 661	584 838	711 529	243 314	355 991	3 829 336
995-96	1 014 521	226 309	978 332	172 285	639 267	674 131	226 496	567 191	4 498 532
996-97	1 067 846	205 433	981 918	290 382	569 727	1 140 111	229 503	528 523	5 013 442
MONTHLY									
1996-97									
October	68 176	12 456	85 814	28 892	51 440	111 387	20 149	47 095	425 409
November	58 151	21 794	71 302	28 399	47 286	140 287	19 269	56 989	443 477
December	119 518	25 589	87 427	25 499	63 810	122 815	22 225	54 544	521 428
January	133 106	1 294	72 585	10 035	33 508	69 654	15 632	43 473	379 289
February	151 003	39 505	86 482	33 856	43 376	93 004	18 510	45 485	511 223
March	140 271	734	97 840	33 514	50 176	106 476	18 821	59 366	507 198
April	88 768	30 741	86 093	17 247	40 321	96 254	19 110	37 936	416 470
May	42 278	991	85 038	27 168	59 594	85 062	20 725	46 969	367 826
June	54 021	32 623	75 807	27 832	51 123	92 575	17 531	54 860	406 373
1997-98									
July	79 999	30 787	83 270	14 727	48 601	105 143	24 710	29 969	417 206
August	51 729	11 810	93 511	37 889	48 749	99 482	24 132	52 109	419 411
September	55 675	22 149	115 687	24 148	55 582	65 599	21 983	22 055	382 878
October	43 738	1 722	119 371	18 070	39 146	73 868	19 025	45 743	360 683
November	45 524	16 219	89 172	24 922	68 046	134 129	21 171	53 292	452 475
December	102 391	32 819	86 710	26 036	44 824	122 098	21 138	46 526	482 542

(a) Final stage of production in South Australia.

7

MERCHANDISE IMPORTS, By Selected Commodity Group(a)

Period	Food, beverages and tobacco	Petroleum and petroleum products	Chemicals	Textiles	Metals and metal manu- factures	Machinery	Road, vehicles, parts and accessories	Other manu- factured goods	Total
	\$'000	\$'000	\$'000	\$'000	\$'000	\$'000	\$'000	\$'000	\$'000
ANNUAL									
1991-92	82 095	362 777	153 574	62 884	151 165	523 848	435 121	513 012	2 396 954
1992-93	91 756	570 334	186 001	57 434	255 924	609 212	661 714	521 723	3 068 122
1993-94	99 177	404 626	200 225	60 172	160 937	595 238	663 617	484 590	2 803 446
1994-95	115 930	330 430	220 536	64 524	214 432	695 038	749 658	563 368	3 099 510
1995-96	118 237	346 397	254 102	76 847	213 487	675 869	546 445	728 096	3 114 309
1996-97	136 695	505 633	225 187	79 708	223 259	868 346	538 690	695 238	3 413 043
MONTHLY									
1996-97									
October	15 412	50 886	14 652	6 584	18 722	72 108	48 332	46 905	283 909
November	13 043	25 966	15 236	5 015	21 111	76 107	42 335	58 621	267 488
December	13 786	47 488	25 644	5 443	12 397	75 884	33 169	82 398	310 393
January	9 935	24 997	24 943	8 035	20 890	107 391	42 244	52 370	300 286
February	9 788	52 619	16 510	6 087	20 531	96 667	45 732	46 861	303 870
March	8 356	50 383	28 119	5 065	14 786	50 785	44 387	46 896	257 380
April	10 428	58 416	18 075	7 691	19 477	62 146	55 134	50 015	297 599
May	11 588	45 354	19 293	6 467	15 123	54 510	35 983	48 198	246 008
June	9 424	39 315	20 252	7 109	20 569	66 474	54 586	48 670	283 146
1997-98									
July	10 522	66 543	14 283	6 788	22 112	107 428	83 398	56 467	376 173
August	12 198	29 929	13 911	6 372	24 929	75 144	82 196	53 129	305 977
September	13 380	61 141	13 489	7 031	21 941	79 599	57 850	81 326	343 925
October	15 074	2 052	12 863	8 282	22 587	76 607	67 994	56 733	271 614
November	14 010	67 170	16 211	7 530	21 298	75 921	55 373	51 324	321 985
December	13 857	32 306	22 877	6 629	21 520	115 511	58 614	58 010	342 020

(a) Goods released from Customs control in South Australia.

8 TURNOVER OF RETAIL ESTABLISHMENTS, By Industry

Period	Food retailing	Department stores	Clothing and soft good retailing	Household good retailing	Recreational good retailing	Other retailing	Hospitality and services	Total
ANNUAL (\$m)								
1991-92	3 223.7	1 087.4	472.4	833.1	289.6	537.7	1 198.4	7 642.5
1992-93	3 081.8	1 101.5	440.4	829.9	324.5	645.0	1 181.8	7 604.9
1993-94	3 253.3	1 107.8	479.0	917.8	378.1	684.0	1 338.8	8 158.8
1994-95	3 477.3	1 128.8	538.0	959.6	383.8	793.5	1 654.4	8 935.4
1995-96	3 786.5	1 138.5	546.7	1 025.6	431.2	902.8	1 762.0	9 593.2
1996-97	4 065.0	1 121.0	467.0	937.0	425.0	792.8	1 648.1	9 455.8
MONTHLY, ORIGINAL (\$m)								
1996-97								
October	350.2	93.0	37.0	77.6	37.4	64.0	133.3	792.5
November	343.5	105.6	37.4	80.0	39.3	64.9	141.2	812.0
December	382.2	170.4	51.9	101.8	56.6	91.1	178.7	1 032.7
January	351.1	79.3	37.1	70.3	33.4	60.5	142.1	774.0
February	317.3	69.7	28.1	67.0	28.7	56.5	127.1	694.5
March	350.0	82.7	34.9	70.1	32.0	60.7	131.9	762.4
April	331.2	86.2	45.3	73.3	32.6	65.0	128.4	762.1
May	344.6	96.2	45.3	77.2	32.0	71.3	132.4	798.9
June	320.2	80.0	40.7	74.9	29.6	63.9	132.5	741.8
1997-98								
July	355.0	97.9	45.8	83.1	31.6	67.5	123.7	804.6
August	349.6	80.5	38.7	83.5	32.0	66.0	127.4	777.6
September	348.9	84.8	38.8	84.3	33.1	65.8	121.1	776.9
October	370.4	92.0	46.3	94.3	34.6	76.1	126.5	840.2
November	365.3	105.6	45.6	95.4	36.6	79.1	128.9	856.7
December	418.1	160.5	58.3	121.3	52.5	107.7	148.2	1 066.5
MONTHLY, TREND (\$m)								
1996-97								
October	335.7	93.8	37.1	78.6	36.9	63.4	136.1	783.1
November	338.2	93.9	36.8	77.1	36.2	62.7	135.6	782.7
December	341.0	94.1	37.0	76.0	35.3	62.9	135.7	784.2
January	343.2	94.0	37.5	75.4	34.4	63.7	136.1	786.4
February	344.4	93.7	38.3	75.5	33.8	64.9	136.6	788.5
March	344.5	93.3	39.4	75.9	33.4	66.3	137.3	790.6
April	344.5	93.1	40.6	76.6	33.4	67.4	137.8	793.3
May	345.3	93.3	41.8	77.8	33.6	67.9	137.7	797.1
June	347.6	93.8	42.9	79.8	34.0	68.0	136.8	802.6
1997-98								
July	351.2	94.3	43.7	82.3	34.3	68.2	134.6	808.6
August	355.0	94.4	44.1	85.0	34.5	69.0	131.3	813.3
September	357.7	94.0	44.1	87.7	34.6	70.8	127.5	816.3
October	359.2	93.2	44.0	90.0	34.5	73.1	124.0	818.0
November	360.0	92.1	43.7	91.8	34.4	75.7	121.1	819.0
December	359.9	91.0	43.3	93.4	34.2	78.3	118.5	819.2
PERCENTAGE CHANGE FROM PREVIOUS MONTH, TREND								
1996-97								
September	0.4	0.0	-2.3	-1.7	0.5	-2.8	-1.8	-0.6
October	0.5	0.1	-2.1	-2.0	-0.8	-2.2	-1.2	-0.4
November	0.7	0.1	-0.8	-1.9	-1.9	-1.1	-0.4	-0.1
December	0.8	0.2	0.5	-1.4	-2.5	0.3	0.1	0.2
January	0.6	-0.1	1.4	-0.8	-2.5	1.3	0.3	0.3
February	0.3	-0.3	2.1	0.1	-1.7	1.9	0.4	0.3
March	0.0	-0.4	2.9	0.5	-1.2	2.2	0.5	0.3
April	0.0	-0.2	3.0	0.9	0.0	1.7	0.4	0.3
May	0.2	0.2	3.0	1.6	0.6	0.7	-0.1	0.5
June	0.7	0.5	2.6	2.6	1.2	0.1	-0.7	0.7
1997-98								
July	1.0	0.5	1.9	3.1	0.9	0.3	-1.6	0.7
August	1.1	0.1	0.9	3.3	0.6	1.2	-2.5	0.6
September	0.8	-0.4	0.0	3.2	0.3	2.6	-2.9	0.4
October	0.4	-0.9	-0.2	2.6	-0.3	3.2	-2.7	0.2
November	0.2	-1.2	-0.7	2.0	-0.3	3.6	-2.3	0.1
December	0.0	-1.2	-0.9	1.7	-0.6	3.4	-2.1	0.0

NEW MOTOR VEHICLES REGISTRATIONS, By Type of Vehicle

Period	ORIGINAL.....			SEASONALLY ADJUSTED.....			TREND ESTIMATE.....		
	Passenger vehicles	Other vehicles	Total	Passenger vehicles	Other vehicles	Total	Passenger vehicles	Other vehicles	Total
ANNUAL									
1991-92	32 351	5 333	37 684
1992-93	32 894	5 577	38 471
1993-94	32 806	5 781	38 587
1994-95	35 830	6 736	42 566
1995-96	36 067	6 828	42 895
1996-97	36 146	6 970	43 116
PERCENTAGE CHANGE FROM PREVIOUS YEAR									
1991-92	-6.9	-19.4	-8.9
1992-93	1.7	4.6	2.1
1993-94	-0.3	3.7	0.3
1994-95	9.2	16.5	10.3
1995-96	0.7	1.4	0.8
1996-97	0.2	2.1	0.5
MONTHLY									
1996-97									
October	2 817	548	3 365	2 598	548	3 146	2 830	556	3 386
November	2 976	539	3 515	2 921	533	3 454	2 900	554	3 454
December	2 997	585	3 582	3 003	581	3 584	2 990	564	3 553
January	2 493	449	2 942	3 118	576	3 694	3 079	581	3 660
February	3 302	525	3 827	3 307	574	3 881	3 152	598	3 749
March	3 034	593	3 627	3 091	622	3 713	3 193	608	3 801
April	3 015	701	3 716	3 263	673	3 936	3 205	608	3 813
May	3 028	612	3 640	3 075	562	3 637	3 211	599	3 810
June	3 659	780	4 439	3 357	593	3 951	3 230	585	3 815
1997-98									
July	3 351	545	3 896	3 227	539	3 766	3 276	572	3 849
August	3 368	508	3 876	3 274	574	3 848	3 353	567	3 919
September	3 619	555	4 174	3 487	577	4 064	3 445	571	4 016
October	3 775	560	4 335	3 537	573	4 110	3 546	582	4 127
November	3 663	537	4 199	3 604	563	4 167	3 647	595	4 243
December	3 781	702	4 483	3 877	661	4 537	3 729	607	4 336
PERCENTAGE CHANGE FROM PREVIOUS MONTH									
1996-97									
October	-4.2	10.0	-2.1	-9.7	-1.6	-8.4	0.9	-2.5	0.3
November	5.6	-1.6	4.5	12.4	-2.7	9.8	2.5	-0.4	2.0
December	0.7	8.5	1.9	2.8	9.0	3.8	3.1	1.8	2.9
January	-16.8	-23.2	-17.9	3.8	-0.9	3.1	3.0	3.0	3.0
February	32.5	16.9	30.1	6.1	-0.3	5.1	2.4	2.9	2.4
March	-8.1	13.0	-5.2	-6.5	8.4	-4.3	1.3	1.7	1.4
April	-0.6	18.2	2.5	5.6	8.2	6.0	0.4	0.0	0.3
May	0.4	-12.7	-2.0	-5.8	-16.5	-7.6	0.2	-1.5	-0.1
June	20.8	27.5	22.0	9.2	5.5	8.6	0.6	-2.3	0.1
1997-98									
August	-8.4	-30.1	-12.2	-3.9	6.5	2.2	2.4	-0.9	1.8
July	0.5	-6.8	-0.5	1.5	-9.1	-4.7	1.4	-2.2	0.9
September	7.5	9.3	7.7	6.5	0.5	5.6	2.7	0.7	2.5
October	4.3	0.9	3.9	1.4	-0.7	1.1	2.9	1.9	2.8
November	-3.0	-4.1	-3.1	1.9	-1.7	1.4	2.8	2.2	2.8
December	3.2	30.7	6.8	7.6	17.4	8.9	2.2	2.0	2.2

Period	INDUSTRY.....			Total	TYPE OF ASSET.....	
	Mining	Manu- facturing	Other selected industries		New buildings and structures	Equipment, plant and machinery
ANNUAL (\$m)						
1991-92	193	763	668	1 625	392	1 233
1992-93	218	564	739	1 522	416	1 105
1993-94	97	613	773	1 484	356	1 128
1994-95	115	829	1 162	2 106	351	1 755
1995-96	196	756	921	1 873	358	1 515
1996-97	488	839	1 250	2 580	593	1 984
PERCENTAGE CHANGE FROM PREVIOUS YEAR						
1991-92	58.4	2.9	-32.3	-12.2	-37.5	0.8
1992-93	12.8	-26.1	10.6	-6.4	6.1	-10.4
1993-94	-55.5	8.7	4.6	-2.5	-14.5	2.0
1994-95	18.3	35.2	50.3	41.9	-1.4	55.6
1995-96	70.4	-8.8	-20.7	-11.1	2.0	-13.7
1996-97	149.0	11.0	35.7	37.6	65.6	31.0
QUARTERLY, ORIGINAL (\$m)						
1995-96						
June	59	210	276	545	117	428
1996-97						
September	61	187	399	647	133	514
December	82	234	373	688	172	517
March	79	198	245	521	130	391
June	266	221	233	720	159	561
1997-98						
September	345	169	204	718	159	559
PERCENTAGE CHANGE FROM PREVIOUS QUARTER, ORIGINAL						
1995-96						
June	15.7	25.7	50.0	35.2	51.9	31.3
1996-97						
September	3.4	-11.0	44.6	18.7	13.7	20.1
December	34.4	25.1	-6.5	6.3	29.3	0.6
March	-3.7	-15.4	-34.3	-24.3	-24.4	-24.4
June	238.0	11.6	-4.5	38.8	23.1	44.0
1997-98						
September	29.2	-23.5	-12.8	-0.7	-0.6	-0.7
QUARTERLY, TREND (\$m)						
1995-96						
June	n.a.	n.a.	n.a.	566	117	449
1996-97						
September	n.a.	n.a.	n.a.	618	133	484
December	n.a.	n.a.	n.a.	629	148	481
March	n.a.	n.a.	n.a.	637	155	481
June	n.a.	n.a.	n.a.	685	158	526
1997-98						
September	n.a.	n.a.	n.a.	758	154	604
PERCENTAGE CHANGE FROM PREVIOUS QUARTER, TREND						
1995-96						
June	16.7	23.2	15.1
1996-97						
September	9.2	13.7	7.8
December	1.8	11.3	-0.6
March	1.3	4.7	0.0
June	7.5	1.9	9.4
1997-98						
September	10.7	-2.5	14.8

11

TOURIST ACCOMMODATION

Period	HOTELS, MOTELS AND GUESTHOUSES WITH FACILITIES.....			HOLIDAY FLATS, UNITS AND HOUSES.....			SHORT-TERM CARAVAN PARKS.....		
	Guest rooms	Room occupancy	Takings	Flats, units and houses	Unit occupancy	Takings	Sites	Site occupancy	Takings
	no.	%	\$'000	no.	%	\$'000	no.	%	\$'000
ANNUAL									
1991-92	10 745	46.6	130 578	1 302	40.4	10 492	20 601	17.1	19 111
1992-93	10 632	46.5	129 882	1 338	40.2	10 740	20 038	22.3	20 113
1993-94	10 597	48.6	138 782	1 338	40.9	11 700	19 591	23.7	20 790
1994-95	10 594	51.3	149 698	1 342	40.0	11 644	20 175	24.5	22 537
1995-96	10 772	52.4	161 136	1 356	41.5	12 844	20 187	24.9	23 578
1996-97	10 895	52.6	164 227	1 467	42.2	14 615	20 248	25.2	24 336
PERCENTAGE CHANGE FROM PREVIOUS YEAR									
1991-92	2.9	..	1.5	7.6	..	1.5	4.1	..	5.6
1992-93	-1.1	..	-0.5	2.8	..	2.4	-2.7	..	5.2
1993-94	-0.3	..	6.9	0.0	..	8.9	-2.2	..	3.4
1994-95	0.0	..	7.9	0.3	..	-0.5	3.0	..	8.4
1995-96	1.7	..	7.6	1.0	..	10.3	0.1	..	4.6
1996-97	1.1	..	1.9	8.1	..	13.8	0.3	..	3.2
QUARTERLY									
1995-96									
June	10 865	51.4	39 121	1 451	38.0	2 940	20 122	25.0	5 736
1996-97									
September	10 879	48.9	37 567	1 426	35.1	2 885	20 247	21.0	4 735
December	10 951	54.9	43 266	1 470	40.7	3 651	20 260	25.2	6 340
March	10 909	55.4	43 033	1 493	54.1	4 895	20 251	30.4	7 742
June	10 842	51.1	40 361	1 477	38.8	3 184	20 233	24.3	5 519
1997-98									
September	10 885	52.2	41 722	1 465	35.1	2 964	20 844	22.3	5 273
PERCENTAGE CHANGE FROM PREVIOUS QUARTER									
1995-96									
June	1.0	..	-6.7	4.5	..	-34.8	-0.2	..	-17.2
1996-97									
September	0.1	..	-4.0	-1.7	..	-1.9	0.6	..	-17.5
December	0.7	..	15.2	3.1	..	26.6	0.1	..	33.9
March	-0.4	..	-0.5	1.6	..	34.1	0.0	..	22.1
June	-0.6	..	-6.2	-1.1	..	-35.0	-0.1	..	-28.7
1997-98									
September	0.4	..	3.4	-0.8	..	-6.9	3.0	..	-4.5

Period	NEW HOUSES.....		TOTAL DWELLING UNITS.....		New residential building	Alterations and additions to residential building	Non-residential building	Total building
	Private sector	Total	Private sector	Total				
	no.	no.	no.	no.				
					\$m	\$m	\$m	\$m
ANNUAL								
1991-92	8 613	8 931	10 254	11 290	756	124	627	1 506
1992-93	9 710	10 087	11 548	12 341	841	133	418	1 392
1993-94	9 470	9 901	11 046	11 777	839	122	375	1 336
1994-95	7 757	8 147	9 208	9 762	740	120	493	1 353
1995-96	4 930	5 109	5 760	5 968	469	119	566	1 155
1996-97	5 508	5 604	6 148	6 264	516	117	581	1 213
MONTHLY, ORIGINAL								
1996-97								
November	438	438	488	488	39.9	8.8	39.7	88.5
December	382	383	409	410	34.8	9.7	28.0	72.5
January	340	340	351	351	29.6	8.6	41.9	80.1
February	429	434	467	472	39.7	9.8	53.1	102.6
March	486	501	526	543	41.8	8.9	35.4	86.1
April	559	568	615	628	52.6	10.9	39.2	102.8
May	537	551	599	620	52.5	9.9	64.7	127.1
June	518	540	571	597	49.5	9.2	92.0	150.7
1997-98								
July	571	583	622	634	51.1	10.8	125.1	187.0
August	513	529	552	568	49.3	10.1	63.8	123.2
September	505	527	570	600	51.9	10.7	58.6	121.1
October	523	538	584	599	51.2	12.0	34.1	97.4
November	482	490	544	552	51.2	11.1	64.5	126.7
December	475	482	506	513	48.1	10.6	35.1	93.7
MONTHLY, TREND								
1996-97								
November	419	426	474	482	n.a.	n.a.	n.a.	n.a.
December	433	439	476	483	n.a.	n.a.	n.a.	n.a.
January	457	461	490	495	n.a.	n.a.	n.a.	n.a.
February	484	489	516	523	n.a.	n.a.	n.a.	n.a.
March	508	514	547	556	n.a.	n.a.	n.a.	n.a.
April	521	530	570	581	n.a.	n.a.	n.a.	n.a.
May	522	533	578	592	n.a.	n.a.	n.a.	n.a.
June	511	525	570	586	n.a.	n.a.	n.a.	n.a.
1997-98								
July	497	513	554	573	n.a.	n.a.	n.a.	n.a.
August	486	505	539	560	n.a.	n.a.	n.a.	n.a.
September	484	504	533	555	n.a.	n.a.	n.a.	n.a.
October	489	509	533	555	n.a.	n.a.	n.a.	n.a.
November	496	515	535	556	n.a.	n.a.	n.a.	n.a.
December	502	520	540	559	n.a.	n.a.	n.a.	n.a.
PERCENTAGE CHANGE FROM PREVIOUS MONTH, TREND								
1996-97								
December	3.3	3.1	0.4	0.2
January	5.5	5.0	2.9	2.5
February	5.9	6.1	5.3	5.7
March	5.0	5.1	6.0	6.3
April	2.6	3.1	4.2	4.5
May	0.2	0.6	1.4	1.9
June	-2.1	-1.5	-1.4	-1.0
1997-98								
July	-2.7	-2.3	-2.8	-2.2
August	-2.2	-1.6	-2.7	-2.3
September	-0.4	-0.2	-1.1	-0.9
October	1.0	1.0	0.0	0.0
November	1.4	1.2	0.4	0.2
December	1.2	1.0	0.9	0.5

13

BUILDING COMMENCEMENTS

Period	NEW HOUSES.....		TOTAL DWELLING UNITS(a).....		Alterations and additions to residential building		NON-RESIDENTIAL BUILDING.....		
	Private sector	Total	Private sector	Total	New residential building		Private sector	Total	Total building
	no.	no.	no.	no.	\$m	\$m	\$m	\$m	\$m
ANNUAL									
1991-92	8 036	8 344	9 635	10 700	727.2	125.1	344.5	607.8	1 460.1
1992-93	9 122	9 416	10 889	11 646	816.2	122.4	205.5	458.7	1 397.2
1993-94	9 159	9 590	10 712	11 501	845.3	126.5	209.9	373.0	1 344.8
1994-95	7 745	8 210	9 132	9 796	765.5	125.3	251.7	518.5	1 409.3
1995-96	4 836	5 070	5 691	5 960	496.5	121.7	452.8	631.8	1 250.0
1996-97	5 057	5 113	5 704	5 790	496.3	116.9	423.4	568.8	1 181.9
QUARTERLY									
1995-96									
March	1 044	1 089	1 237	1 295	109.2	29.4	80.1	139.9	278.4
June	1 153	1 183	1 273	1 307	111.0	28.8	217.7	264.0	403.9
1996-97									
September	1 191	1 207	1 302	1 321	108.7	26.2	67.9	104.2	239.1
December	1 245	1 262	1 513	1 530	133.8	33.8	85.3	113.2	280.8
March	1 099	1 102	1 242	1 247	106.3	26.2	76.6	121.2	253.6
June	1 522	1 541	1 655	1 691	147.5	30.7	193.5	230.2	408.4
1997-98									
September	1 331	1 376	1 451	1 509	129.5	30.9	70.8	97.3	257.7

(a) Includes conversions.

Period	NEW HOUSES...		NEW RESIDENTIAL BUILDING.....		Alterations and additions to residential building	NON-RESIDENTIAL BUILDING.....		TOTAL BUILDING...	
	Private sector	Total	Private sector	Total		Private sector	Total	Private sector	Total
	\$m	\$m	\$m	\$m		\$m	\$m	\$m	\$m
ANNUAL									
1991-92	591.5	607.5	693.4	748.5	125.1	310.3	484.1	1 127.5	1 357.6
1992-93	647.2	660.9	743.8	780.6	127.1	297.9	570.9	1 166.3	1 478.6
1993-94	719.1	746.4	828.9	876.3	132.0	217.7	462.1	1 177.2	1 470.4
1994-95	659.6	693.6	766.1	816.4	129.4	271.6	476.9	1 164.3	1 422.7
1995-96	441.4	460.5	512.9	534.8	130.6	311.4	542.1	953.2	1 207.5
1996-97	433.9	438.9	485.2	490.4	122.2	444.2	663.3	1 049.8	1 275.9
QUARTERLY									
1995-96									
June	102.6	105.0	117.6	120.3	32.6	88.1	155.6	238.3	308.5
1996-97									
September	97.3	99.3	109.4	111.3	28.0	83.4	143.8	219.4	283.1
December	109.1	110.6	121.3	122.8	35.4	119.6	189.8	276.0	348.0
March	99.9	100.3	114.1	114.6	26.8	100.8	147.8	241.6	289.2
June	127.6	128.7	140.5	141.7	32.0	140.4	181.9	312.8	355.6
1997-98									
September	121.6	124.8	135.3	138.8	31.9	141.7	179.0	308.4	349.7

Period	Pigmeat	Beef	Mutton	Lamb	Gas	Coal	Sawn timber(a)
	tonnes	tonnes	tonnes	tonnes	m MJ	tonnes	m ³
ANNUAL							
1991-92	34 538	90 661	72 578	29 941	78 210	2 819 880	271 603
1992-93	38 153	96 338	65 689	39 334	83 000	2 753 610	317 096
1993-94	38 394	94 395	71 354	45 199	89 382	2 643 000	364 961
1994-95	32 063	99 108	66 759	36 147	86 123	2 554 560	392 349
1995-96	31 695	89 704	55 600	37 735	76 074	2 409 120	413 545
1996-97	29 853	85 350	56 875	35 081	76 495	2 633 820	333 691
PERCENTAGE CHANGE FROM PREVIOUS YEAR							
1991-92	-10.6	4.2	10.9	-6.5	6.7	15.5	13.1
1992-93	10.5	6.3	-9.5	31.4	6.1	-2.4	16.7
1993-94	0.6	-2.0	8.6	14.9	7.7	-4.0	15.1
1994-95	-16.5	5.0	-6.4	-20.0	-3.6	-3.3	7.5
1995-96	-1.1	-9.5	-16.7	4.4	-11.7	-5.7	5.4
1996-97	-5.8	-4.9	2.3	-7.0	0.6	9.3	-19.3
MONTHLY/QUARTERLY							
1996-97							
October	2 232	8 130	5 528	3 422
November	2 629	8 930	7 351	2 983
December	2 000	6 681	4 500	2 574	17 673	550 380	86 509
January	2 136	7 333	5 815	3 247
February	2 570	7 223	6 057	3 154
March	2 202	6 845	5 396	2 899	17 945	684 780	68 403
April	2 508	8 355	5 632	3 501
May	2 828	7 606	4 063	3 469
June	2 533	7 168	3 382	3 304	19 777	720 300	82 913
1997-98							
July	2 447	6 810	1 890	1 464
August	2 669	6 031	4 760	2 396
September	2 323	5 832	5 513	2 782	21 942	752 868	90 631
October	2 243	7 868	5 764	3 860
November	2 857	7 855	6 253	3 242
December	1 769	6 563	5 191	2 782	n.y.a.	610 208	83 126
PERCENTAGE CHANGE FROM PREVIOUS MONTH/QUARTER							
1996-97							
October	-3.3	22.3	48.1	23.3
November	17.8	9.8	33.0	-12.8
December	-23.9	-25.2	-38.8	-13.7	-16.2	-18.9	-9.0
January	6.8	9.8	29.2	26.1
February	20.3	-1.5	4.2	-2.9
March	-14.3	-5.2	-10.9	-8.1	1.5	24.4	-20.9
April	13.9	22.1	4.4	20.8
May	12.8	-9.0	-27.9	-0.9
June	-10.4	-5.8	-16.8	-4.8	10.2	5.2	22.4
1997-98							
July	-3.4	-5.0	-44.1	-9.0
August	9.1	-11.4	151.9	-61.2
September	-13.0	-3.3	15.8	38.6	10.9	4.5	9.3
October	-3.4	34.9	4.6	38.7
November	27.4	-0.2	8.5	-16.0
December	-22.3	-16.5	-17.0	-14.2	n.y.a.	-18.9	-8.3

(a) From Australian softwood logs only.

Period	Food	Clothing	Housing	Household equipment and operation	Transport- ation	Tobacco and alcohol	Health and personal care	Recreation and education	All groups
ANNUAL AVERAGE (1989-90 = 100)									
1991-92	106.0	105.3	100.4	107.5	110.5	118.6	127.8	107.7	108.9
1992-93	109.3	107.0	94.3	107.6	115.0	131.2	134.9	110.7	111.2
1993-94	111.7	106.6	92.1	108.0	117.8	141.5	142.7	113.7	113.4
1994-95	115.1	104.9	97.8	109.2	120.2	148.9	151.3	116.3	116.9
1995-96	118.2	105.1	103.6	112.1	124.5	160.1	158.9	118.0	121.2
1996-97	120.8	105.5	98.9	113.4	124.6	165.3	165.4	121.1	122.3
PERCENTAGE CHANGE FROM PREVIOUS YEAR, ANNUAL AVERAGE									
1991-92	2.1	1.6	-3.6	2.0	3.3	5.9	12.7	2.8	2.5
1992-93	3.1	1.6	-6.1	0.1	4.1	10.6	5.6	2.8	2.1
1993-94	2.2	-0.4	-2.3	0.4	2.4	7.9	5.8	2.7	2.0
1994-95	3.0	-1.6	6.2	1.1	2.0	5.2	6.0	2.2	3.1
1995-96	2.7	0.2	5.9	2.7	3.6	7.6	5.0	1.5	3.7
1996-97	2.2	0.3	-4.5	1.2	0.0	3.3	4.1	2.6	0.9
QUARTERLY (1989-90 = 100.0)									
1996-97									
September	119.2	105.5	103.5	113.0	124.4	164.7	160.9	119.2	122.2
December	120.7	106.0	100.5	113.8	125.5	164.9	164.9	119.8	122.6
March	121.2	105.1	97.5	113.3	125.6	165.2	167.7	122.3	122.6
June	121.9	105.2	94.1	113.6	122.7	166.5	168.0	122.9	121.9
1997-98									
September	122.0	105.4	92.2	113.6	123.2	167.2	158.6	123.7	121.2
December	122.0	106.2	90.2	113.6	122.3	168.8	164.1	123.6	121.2
PERCENTAGE CHANGE FROM SAME QUARTER OF PREVIOUS YEAR									
1996-97									
September	1.2	0.7	0.8	1.3	0.0	6.4	3.5	2.3	1.7
December	2.1	0.8	-3.2	1.6	1.0	3.3	3.9	2.1	1.2
March	2.5	0.2	-6.2	0.8	1.4	1.8	4.2	2.9	0.8
June	3.0	-0.3	-9.4	1.2	-2.1	1.8	4.6	3.1	-0.1
1997-98									
September	2.3	-0.1	-10.9	0.5	-1.0	1.5	-1.4	3.8	-0.8
December	1.1	0.2	-10.2	-0.2	-2.5	2.4	-0.5	3.2	-1.1
PERCENTAGE CHANGE FROM PREVIOUS QUARTER									
1996-97									
September	0.7	0.0	-0.4	0.6	-0.7	0.7	0.2	0.0	0.2
December	1.3	0.5	-2.9	0.7	0.9	0.1	2.5	0.5	0.3
March	0.4	-0.8	-3.0	-0.4	0.1	0.2	1.7	2.1	0.0
June	0.6	0.1	-3.5	0.3	-2.3	0.8	0.2	0.5	-0.6
1997-98									
September	0.1	0.2	-2.0	0.0	0.4	0.4	-5.6	0.7	-0.6
December	0.0	0.8	-2.2	0.0	-0.7	1.0	3.5	-0.1	0.0

		QUARTER.....				
		Dec	Mar	June	Sep	Dec
		1996	1997	1997	1997	1997
Item	Unit	cents	cents	cents	cents	cents
Milk, carton, supermarket sales	1 L	116	116	122	122	124
Cheese, processed, sliced, wrapped	500 g	318	318	320	323	322
Butter	500 g	172	167	161	164	167
Bread, white loaf, sliced, supermarket sales	680 g	157	153	160	161	163
Self-raising flour	2 kg	227	240	235	239	236
Beef						
Rump steak	1 kg	1 061	1 157	1 141	1 135	1 098
Corned silverside	1 kg	625	597	602	626	590
Lamb						
Leg	1 kg	563	572	574	565	535
Loin chops	1 kg	778	799	792	794	796
Forequarter chops	1 kg	528	568	547	534	575
Pork						
Leg	1 kg	617	616	574	622	618
Loin chops	1 kg	793	799	792	802	788
Chicken, frozen	1 kg	375	351	370	362	351
Bacon, middle rashers	250 g pkt	317	325	295	321	295
Sausages	1 kg	351	359	360	360	351
Potatoes	1 kg	73	78	108	111	104
Onions	1 kg	128	134	114	127	165
Peaches, canned	825 g	190	182	185	188	185
Eggs, 55g	doz	248	246	246	239	235
Sugar, white	2 kg	182	183	182	185	183
Tea	250 g	172	169	175	182	183
Coffee, instant, jar	150 g	513	500	539	573	592
Margarine, polyunsaturated	500 g	143	141	133	144	142
Petrol						
Leaded	1 L	76.1	77.5	75.4	74.5	75.0
Unleaded	1 L	73.7	75.2	73.0	72.2	72.6

NET MIGRATION...

Period	Live births(a)	Deaths(a)	Natural increase	Interstate	Overseas(b)	Total increase	Population at end of period(c)
ANNUAL							
1991-92	19 530	11 035	8 532	- 133	2 897	11 296	1 456 523
1992-93	19 686	11 163	8 403	-4 650	1 546	5 299	1 460 730
1993-94	20 036	11 743	7 949	-3 466	1 994	6 477	1 466 127
1994-95	19 559	11 496	7 902	-6 529	2 883	4 256	1 469 411
1995-96	10 916	11 186	7 645	-6 238	4 119	5 526	1 474 253
1996-97	18 934	11 577	7 258	-5 185	3 480	5 553	1 479 806
MONTHLY/QUARTERLY							
1995-96							
June	1 448	886	1 818	-1 090	753	1 481	1 474 253
1996-97							
July	1 732	1 102
August	1 662	1 207
September	1 464	977	1 575	-1 746	902	731	1 474 984
October	1 779	1 196
November	1 536	835
December	1 424	920	1 780	-1 565	1 003	1 218	1 476 202
January	1 582	910
February	1 498	827
March	1 301	756	1 880	-1 368	1 228	1 740	1 477 942
April	1 674	934
May	1 806	1 079
June	1 492	949	2 023	-506	347	1 864	1 479 806

(a) Registrations.

(b) Includes category jumping.

Period	EMPLOYED FULL-TIME.....		EMPLOYED PART-TIME.....		TOTAL EMPLOYED.....		UNEMPLOYED..		LABOUR FORCE.....	
	Males	Females	Males	Females	Males	Females	Males	Females	Males	Females
ANNUAL AVERAGE ('000)										
1991-92	323.3	145.7	37.5	121.6	360.8	267.3	50.0	29.3	410.8	296.6
1992-93	322.2	143.2	39.2	126.8	361.4	270.0	51.9	29.9	413.3	299.9
1993-94	322.0	146.3	40.0	127.0	362.0	273.3	47.3	29.9	409.3	303.2
1994-95	323.1	151.5	42.6	131.3	365.7	282.8	44.6	28.7	410.3	311.5
1995-96	325.2	150.0	45.5	136.7	370.7	286.7	42.6	26.0	413.2	312.7
1996-97	320.8	150.5	48.6	140.7	369.4	291.2	42.1	27.5	411.5	318.7
MONTHLY, ORIGINAL ('000)										
1996-97										
January	321.3	151.3	44.8	133.5	366.2	284.8	44.9	28.8	411.0	313.6
February	320.5	152.4	47.6	140.0	368.1	292.3	44.2	30.2	412.3	322.5
March	318.6	148.6	54.9	145.6	373.5	294.1	41.6	29.5	415.1	323.6
April	319.9	148.2	49.3	143.2	369.2	291.5	43.8	27.4	413.0	318.8
May	318.3	149.2	51.6	140.2	369.9	289.4	44.0	25.7	413.9	315.1
June	324.9	151.1	49.1	141.6	374.0	292.7	41.4	26.8	415.4	319.5
1997-98										
July	325.9	149.3	47.5	140.1	373.4	289.4	40.9	27.0	414.3	316.5
August	323.3	148.8	50.3	141.6	374.1	290.4	42.5	27.4	415.3	311.6
September	324.0	148.5	50.6	141.7	374.7	290.3	42.5	27.3	419.9	317.5
October	324.1	145.2	49.6	143.6	373.7	288.8	43.2	26.6	416.9	315.4
November	324.0	147.8	49.2	142.4	373.2	290.3	42.5	26.7	415.8	317.0
December	329.8	151.7	47.1	135.8	376.9	287.5	42.8	28.3	419.7	315.8
January	325.1	147.6	43.3	127.3	368.4	274.9	46.1	32.8	414.5	307.7
MONTHLY, TREND ('000)										
1996-97										
January	321.1	150.1	47.6	141.9	368.7	292.0	41.6	27.1	410.3	319.1
February	321.2	150.3	48.1	142.1	369.3	292.4	42.0	27.1	411.3	319.5
March	321.1	150.7	48.9	141.7	370.0	292.4	42.6	27.1	412.6	319.5
April	321.4	150.8	49.4	140.9	370.8	291.7	43.1	27.3	413.9	319.0
May	322.2	150.5	49.8	140.0	372.0	290.5	43.4	27.6	415.4	318.1
June	323.3	149.5	49.9	139.6	373.2	289.1	43.5	27.8	416.7	316.9
1997-98										
July	324.2	148.2	50.0	140.2	374.2	288.4	43.5	27.9	417.7	316.3
August	324.6	146.9	50.1	141.3	374.7	288.2	43.5	27.9	418.2	316.1
September	324.6	146.1	50.0	142.1	374.6	288.2	43.4	27.9	418.0	316.1
October	324.4	145.9	49.5	142.0	373.9	287.9	43.4	27.9	417.3	315.8
November	324.3	146.1	48.7	141.0	373.0	287.1	43.3	28.1	416.3	315.2
December	324.4	146.5	47.6	139.5	372.0	286.0	43.1	28.3	415.1	314.3
January	324.6	147.2	46.7	137.7	371.3	284.9	42.8	28.7	414.1	313.6
PERCENTAGE CHANGE FROM PREVIOUS MONTH, TREND										
1996-97										
January	0.1	0.0	0.6	0.4	0.2	0.2	0.0	-0.7	0.2	0.1
February	0.0	0.1	1.1	0.1	0.2	0.1	1.0	0.0	0.2	0.1
March	0.0	0.3	1.7	-0.3	0.2	0.0	1.4	0.0	0.3	0.0
April	0.1	0.1	1.0	-0.6	0.2	-0.2	1.2	0.7	0.3	-0.2
May	0.2	-0.2	0.6	-0.6	0.3	-0.4	0.7	1.1	0.4	-0.3
June	0.3	-0.7	0.2	-0.3	0.3	-0.5	0.2	0.7	0.3	-0.4
1997-98										
July	0.3	-0.9	0.2	0.4	0.3	-0.2	0.0	0.4	0.2	-0.2
August	0.1	-0.9	0.2	0.8	0.1	-0.1	0.0	0.0	0.1	-0.1
September	0.0	-0.5	-0.2	0.6	0.0	0.0	-0.2	0.0	0.0	0.0
October	-0.1	-0.1	-1.0	-0.1	-0.2	-0.1	0.0	0.0	-0.2	-0.1
November	0.0	0.1	-1.6	-0.7	-0.2	-0.3	-0.2	0.7	-0.2	-0.2
December	0.0	0.3	-2.3	-1.1	-0.3	-0.4	-0.5	0.7	-0.3	-0.3
January	0.1	0.5	-1.9	-1.3	-0.2	-0.4	-0.7	1.4	-0.2	-0.2

(a) Population aged 15 and over.

Period	CIVILIAN POPULATION.....		UNEMPLOYMENT RATE				PARTICIPATION RATE..		
	Males aged 15 and over	Females aged 15 and over	Persons aged 15-19	Males all ages	Females all ages	Persons all ages	Males	Females	Persons
	'000	'000	%	%	%	%	%	%	%
ANNUAL AVERAGE									
1991-92	563.9	585.4	25.0	12.1	9.9	11.2	72.9	50.7	61.6
1992-93	567.4	588.9	26.6	12.6	10.0	11.5	72.8	51.0	61.7
1993-94	570.6	592.0	28.3	11.5	9.8	10.8	71.7	51.2	61.3
1994-95	573.7	594.7	25.2	10.9	9.2	10.2	71.5	52.4	61.8
1995-96	576.2	597.1	27.2	10.3	8.3	9.5	71.7	52.4	61.9
1996-97	579.8	600.6	23.7	10.2	8.6	9.5	71.0	53.1	61.9
PERCENTAGE CHANGE FROM PREVIOUS YEAR.									
1991-92	1.0	1.0
1992-93	0.6	0.6
1993-94	0.6	0.6
1994-95	0.6	0.5
1995-96	0.4	0.5
1996-97	0.6	0.4
MONTHLY, ORIGINAL									
1996-97									
November	579.5	600.2	22.2	10.1	8.0	9.2	70.8	52.3	61.4
December	579.8	600.5	25.9	9.9	9.1	9.6	71.6	53.6	62.5
January	580.0	600.7	22.9	10.9	9.2	10.2	70.9	52.2	61.4
February	580.3	601.0	23.5	10.7	9.4	10.1	71.1	53.7	62.2
March	580.5	601.2	22.7	10.0	9.1	9.6	71.5	53.8	62.5
April	580.8	601.5	26.7	10.6	8.6	9.7	71.1	53.0	61.9
May	581.1	601.8	23.7	10.6	8.2	9.6	71.2	52.4	61.6
June	581.5	602.2	24.3	10.0	8.4	9.3	71.4	53.1	62.1
1997-98									
July	581.9	602.6	21.6	9.9	8.5	9.3	71.2	52.5	61.7
August	582.3	602.9	21.2	10.1	8.2	9.3	71.3	51.7	61.3
September	582.7	603.3	23.2	10.6	8.7	9.8	72.1	52.6	62.2
October	583.1	603.7	22.5	10.4	8.4	9.5	71.5	52.2	61.7
November	583.6	604.1	20.9	10.2	8.4	9.5	71.3	52.5	61.7
December	584.0	604.5	23.3	10.2	8.9	9.7	71.9	52.2	61.9
January	584.3	604.8	26.5	11.1	10.7	10.9	70.9	50.9	60.7
MONTHLY, TREND									
1996-97									
November	n.a.	n.a.	n.a.	10.2	8.6	9.5	70.6	53.1	61.7
December	n.a.	n.a.	n.a.	10.1	8.6	9.5	70.6	53.1	61.7
January	n.a.	n.a.	n.a.	10.1	8.5	9.4	70.7	53.1	61.8
February	n.a.	n.a.	n.a.	10.2	8.5	9.5	70.9	53.2	61.9
March	n.a.	n.a.	n.a.	10.3	8.5	9.5	71.1	53.2	62.0
April	n.a.	n.a.	n.a.	10.4	8.6	9.6	71.3	53.0	62.0
May	n.a.	n.a.	n.a.	10.5	8.7	9.7	71.5	52.8	62.0
June	n.a.	n.a.	n.a.	10.4	8.8	9.7	71.7	52.6	62.0
1997-98									
July	n.a.	n.a.	n.a.	10.4	8.8	9.7	71.8	52.5	62.0
August	n.a.	n.a.	n.a.	10.4	8.8	9.7	71.8	52.4	62.0
September	n.a.	n.a.	n.a.	10.4	8.8	9.7	71.7	52.4	61.9
October	n.a.	n.a.	n.a.	10.4	8.8	9.7	71.6	52.3	61.8
November	n.a.	n.a.	n.a.	10.4	8.9	9.8	71.3	52.2	61.6
December	n.a.	n.a.	n.a.	10.4	9.0	9.8	71.1	52.0	61.4
January	n.a.	n.a.	n.a.	10.3	9.1	9.8	70.9	51.8	61.2

(a) Population aged 15 and over.

AVERAGE WEEKLY EARNINGS OF EMPLOYEES

FULL-TIME ADULTS.....						ALL EMPLOYEES.....			
Ordinary time earnings.....			Total earnings.....			Total earnings.....			
Period	Males	Females	Persons	Males	Females	Persons	Males	Females	Persons
ANNUAL AVERAGE (\$ per week)									
1991-92	588.40	524.10	567.80	624.90	534.00	595.80	564.80	386.90	483.70
1992-93	610.10	534.90	585.40	646.40	546.80	613.70	560.00	382.60	477.40
1993-94	625.10	547.60	600.00	667.50	560.10	632.70	595.10	396.60	503.30
1994-95	632.70	559.10	608.20	681.70	572.50	645.30	599.90	411.90	513.40
1995-96	653.80	555.90	622.80	703.15	568.50	660.05	620.10	403.90	520.65
1996-97	678.20	575.10	644.33	735.08	589.35	687.20	636.85	408.73	529.78
PERCENTAGE CHANGE FROM PREVIOUS YEAR									
1991-92	4.8	7.8	5.6	4.3	7.6	5.1	3.3	8.0	4.7
1992-93	3.7	2.1	3.1	3.4	2.4	3.0	-0.8	-1.1	-1.3
1993-94	2.5	2.4	2.5	3.3	2.4	3.1	6.3	3.7	5.4
1994-95	1.2	2.1	1.4	2.1	2.2	2.0	0.8	3.9	2.0
1995-96	3.3	-0.6	2.4	3.1	-0.7	2.3	3.4	-1.9	1.4
1996-97	3.7	3.5	3.5	4.5	3.7	4.1	2.7	1.2	1.8
QUARTERLY (\$ per week)									
1995-96									
17 May	668.90	557.10	633.80	721.40	571.80	674.40	640.50	408.30	534.60
1996-97									
16 August	666.70	562.40	632.40	720.10	574.40	672.30	628.50	403.60	523.60
15 November	669.60	575.30	639.50	728.30	591.80	684.80	626.80	402.30	522.20
21 February	685.60	578.20	649.70	741.90	594.00	692.40	639.80	409.50	530.80
16 May	690.90	584.50	655.70	750.00	597.20	699.30	652.30	419.50	542.50
1997-98									
15 August	703.90	583.70	663.40	756.20	593.50	701.40	651.00	420.00	542.50
PERCENTAGE CHANGE FROM CORRESPONDING REFERENCE DATE IN PREVIOUS YEAR									
1995-96									
17 May	5.3	-1.2	3.6	5.3	-1.0	3.8	6.6	-0.6	4.1
1996-97									
16 August	4.2	0.4	3.0	5.2	0.5	3.8	4.6	-1.2	2.6
15 November	3.4	4.8	3.8	5.1	5.5	5.2	3.2	1.5	2.3
21 February	4.1	3.8	3.7	4.0	4.3	3.8	1.3	1.8	0.7
16 May	3.3	4.9	3.5	4.0	4.4	3.7	1.8	2.7	1.5
1997-98									
15 August	5.6	3.8	4.9	5.0	3.3	4.3	3.6	4.1	3.6
PERCENTAGE CHANGE FROM PREVIOUS REFERENCE DATE									
1995-96									
17 May	1.5	0.0	1.2	1.1	0.4	1.1	1.4	1.5	1.4
1996-97									
16 August	-0.3	1.0	-0.2	-0.2	0.5	-0.3	-1.9	-1.2	-2.1
15 November	0.4	2.3	1.1	1.1	3.0	1.9	-0.3	-0.3	-0.3
21 February	2.4	0.5	1.6	1.9	0.4	1.1	2.1	1.8	1.6
16 May	0.8	1.1	0.9	1.1	0.5	1.0	2.0	2.4	2.2
1997-98									
15 August	1.9	-0.1	1.2	0.8	-0.6	0.3	-0.2	0.1	0.0

SECURED HOUSING
FINANCE COMMITMENTS ..

Period	Dwelling units	Value	Alterations and additions	Personal finance commitments	Commercial finance commitments	Lease finance commitments
	no.	\$m	\$m	\$m	\$m	\$m
ANNUAL						
1991-92	31 765	2 083.8	88.8	1 456.7	6 667.9	256.2
1992-93	36 960	2 569.5	102.8	1 656.9	5 122.5	249.5
1993-94	45 725	3 387.9	221.8	1 840.3	5 467.2	250.6
1994-95	36 429	2 879.7	242.2	2 152.2	5 405.6	271.4
1995-96	38 707	2 982.2	240.7	2 211.5	6 516.2	265.4
1996-97	36 680	2 956.1	188.1	2 612.0	6 092.4	232.0
PERCENTAGE CHANGE FROM PREVIOUS YEAR						
1991-92	10.7	20.4	51.0	-3.1	6.6	-20.7
1992-93	16.4	23.3	15.8	13.7	-23.2	-2.6
1993-94	23.7	31.9	115.7	11.1	6.7	0.5
1994-95	-20.3	-15.0	9.2	16.9	-1.1	8.3
1995-96	6.3	3.6	-0.6	2.8	20.5	-2.2
1996-97	-5.2	-0.9	-21.9	18.1	-6.5	-12.6
MONTHLY						
1996-97						
October	2 965	233.6	14.0	203.6	444.8	15.3
November	3 115	248.1	14.2	188.8	541.7	17.8
December	2 995	251.5	13.1	220.7	615.6	19.2
January	2 885	231.3	15.3	221.0	409.1	13.7
February	3 013	246.6	16.4	214.4	415.3	15.3
March	3 117	251.4	12.9	241.7	526.5	13.9
April	3 318	270.4	15.5	251.6	487.5	21.6
May	3 228	264.5	14.8	251.7	561.6	20.7
June	3 172	253.3	11.9	249.8	497.9	30.6
1997-98						
July	3 004	243.4	10.8	278.3	640.2	29.8
August	3 085	251.1	10.4	204.6	377.0	21.8
September	3 033	252.6	9.9	218.5	556.2	21.7
October	3 138	265.4	12.9	231.5	619.2	21.6
November	2 996	255.5	11.5	220.2	450.3	17.8
December	3 197	274.6	10.1	232.8	827.5	20.0
PERCENTAGE CHANGE FROM PREVIOUS MONTH						
1996-97						
October	-3.2	-6.8	-27.9	16.3	-9.5	-31.2
November	5.1	6.2	1.6	-7.3	21.8	16.6
December	-3.9	1.4	-8.4	16.9	13.6	7.7
January	-3.7	-8.0	17.5	0.1	-33.5	-28.6
February	4.4	6.6	7.0	-3.0	1.5	11.5
March	3.5	2.0	-21.3	12.8	26.8	-8.7
April	6.4	7.5	19.6	4.1	-7.4	55.3
May	-2.7	-2.2	-4.3	0.0	15.2	-4.2
June	-1.7	-4.2	-19.8	-0.7	-11.3	47.6
1997-98						
July	-5.3	-3.9	-9.0	11.4	28.6	-2.7
August	2.7	3.1	-3.9	-26.5	-41.1	-27.0
September	-1.7	0.6	-4.3	7.6	47.9	-0.4
October	3.5	5.1	33.2	0.4	11.1	-0.5
November	-4.5	-3.7	-12.8	-0.4	-27.3	-17.7
December	6.7	7.4	-12.0	5.7	83.8	12.4

PUBLICATIONS SOURCE INDEX

.....

- (1) *Australian National Accounts, Quarterly State Details* (Cat. no. 5206.0.40.001)
- (2) *International Merchandise Trade, Australia* (Cat. no. 5422.0) Quarterly
- (3) *Retail Trade, Australia* (Cat. no. 8501.0) Monthly
- (4) *New Motor Vehicles Registrations, Australia, Preliminary* (Cat. no. 9301.0) Monthly
- (5) *State Estimates of Private New Capital Expenditure* (Cat. no. 5646.0) Quarterly
- (6) *Tourist Accommodation, Australia* (Cat. no. 8635.0) Quarterly
- (7) *Building Approvals, Australia* (Cat. no. 8731.0) Monthly
- (8) *Building Activity, Australia* (Cat. no. 8752.0) Quarterly
- (8a) *Building Activity, Australia, Dwelling Unit Commencements, Preliminary* (Cat. no. 8750.0) Quarterly
- (9) *Engineering Construction Activity, Australia* (Cat. no. 8762.0) Quarterly
- (10) *Manufacturing Production, Australia, Preliminary* (Cat. no. 8301.0) Monthly
- (11) *Livestock Products, Australia* (Cat. no. 7215.0) Monthly
- (12) *Actual and Expected Private Mineral Exploration, Australia* (Cat. no. 8412.0) Quarterly
- (13) *Consumer Price Index* (Cat. no. 6401.0) Quarterly
- (14) *Price Index of Materials Used in House Building, Six State Capital Cities and Canberra* (Cat. no. 6408.0) Monthly
- (15) *Price Index of Materials Used in Building Other Than House Building, Six State Capital Cities and Canberra* (Cat. no. 6407.0) Monthly
- (16) *House Price Indexes: Eight Capital Cities* (Cat. no. 6416.0) Quarterly
- (17) *Australian Demographic Statistics* (Cat. no. 3101.0) Quarterly
- (18) *Labour Force, Australia, Preliminary* (Cat. no. 6202.0) Monthly
- (19) *Job Vacancies and Overtime, Australia* (Cat. no. 6354.0) Quarterly
- (20) *Industrial Disputes, Australia* (Cat. no. 6321.0) Monthly
- (21) Unpublished overseas arrival and departure statistics on microfiche
- (22) *Average Weekly Earnings, States and Australia* (Cat. no. 6302.0) Quarterly
- (23) *Award Rates of Pay Indexes, Australia* (Cat. no. 6312.0) Monthly
- (24) *Housing Finance for Owner Occupation, Australia* (Cat. no. 5609.0) Monthly
- (25) Unpublished statistics available from PC AUSSTATS
- (26) *Reserve Bank of Australia Bulletin*



FOR MORE INFORMATION . . .

The ABS publishes a wide range of statistics and other information on Australia's economic and social conditions. Details of what is available in various publications and other products can be found in the ABS Catalogue of Publications and Products available from all ABS Offices.

ABS Products and Services

Many standard products are available from ABS bookshops located in each State and Territory. In addition to these products, information tailored to the needs of clients can be obtained on a wide range of media by contacting your nearest ABS Office. The ABS also provides a Subscription Service for standard products and some tailored information services.

National Dial-a-Statistic Line

0055 86 400

Steadycom P/L: premium rate 25c/20 secs.

This number gives 24-hour access, 365 days a year, for a range of important economic statistics including the CPI.

Internet

<http://www.abs.gov.au>

A wide range of ABS information is available via the Internet, with basic statistics available for each State, Territory and Australia. We also have Key National Indicator ABS product release details and other information of general interest.

Sales and Inquiries

client.services@abs.gov.au

National Mail Order Service (02) 6252 5249
Subscription Service 1300 366 323

	Information Inquiries	Bookshop Sales
CANBERRA	(02) 6252 6627	(02) 6207 0000
SYDNEY	(02) 9268 4611	(02) 9268 4611
MELBOURNE	(03) 9615 7755	(03) 9615 7755
BRISBANE	(07) 3222 6351	(07) 3222 6351
PERTH	(08) 9360 5140	(08) 9360 5140
ADELAIDE	(08) 8237 7100	(08) 8237 7100
HOBART	(03) 6222 5800	(03) 6222 5800
DARWIN	(08) 8943 2111	(08) 8943 2111



Client Services, ABS, PO Box 10, Belconnen ACT 2616



2130740003981

ISSN 1039-8880

RRP \$19.50